

TOURIST ACCOMMODATION AUSTRALIA

EMBARGO: 11.30AM (CANBERRA TIME) THURS 30 JUN 2005

CONTENTS

	<i>page</i>
Notes	2
Summary of findings	3
List of tables	7

ADDITIONAL INFORMATION

Explanatory notes	41
Glossary	46

INQUIRIES

For further information about these and related statistics, contact the National Information and Referral Service on 1300 135 070.

NOTES

FORTHCOMING ISSUES

ISSUE (Quarter)

RELEASE DATE

June 2005 30 September 2005

September 2005 10 January 2006

.....

ABOUT THIS PUBLICATION

This publication presents results from the March quarter 2005 Survey of Tourist Accommodation (STA) for the following categories of establishments. These establishments provide predominantly short-term non-residential accommodation to the general public:

- hotels and resorts with facilities and 15 or more rooms
- motels, private hotels and guest houses with facilities and 15 or more rooms
- serviced apartments with 15 or more units.

CHANGES IN SCOPE

The scope of the quarterly STA was expanded from March quarter 2005. This takes the form of a reduction in the size cut-off for hotels, motels and guest houses and serviced apartments from 15 rooms to 5 rooms. The scope also includes caravan parks with 40 or more powered sites, visitor hostels with 25 or more bed spaces, and holiday flats and units with 15 or more units (see paragraphs 2-6 of the Explanatory Notes).

First results from the expanded scope will be included in the June quarter 2005 issue. This issue will present results from the March and June quarters 2005, after which results will be published quarterly.

CHANGES IN THIS ISSUE

The March quarter 2005 results include an additional 174 establishments with 15 rooms or more which were identified as a part of the expansion of the survey. The inclusion of these establishments has added approximately 0.9% to the level of takings from accommodation. Full details are provided in paragraphs 7-10 of the Explanatory Notes.

Susan Linacre

Acting Australian Statistician

SUMMARY OF FINDINGS

SEASONALLY ADJUSTED AND TREND

SEASONALLY ADJUSTED AND TREND KEY FIGURES, Licensed hotels, motels and guest houses and serviced apartments—Australia

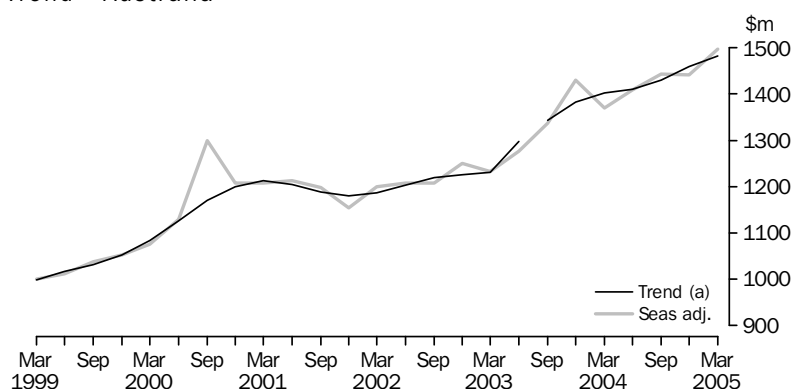
	Mar Qtr 2004	Dec Qtr 2004	Mar Qtr 2005
Seasonally Adjusted			
Room occupancy rate (%)	61.3	62.0	63.2
Takings from accommodation ('000)	1 370 389	1 441 162	1 496 568
Trend			
Room occupancy rate (%)	61.8	62.5	62.9
Takings from accommodation ('000)	1 402 887	1 458 687	1 483 010

Accommodation takings

The trend estimate of the total accommodation takings for licensed hotels with facilities, motels and guest houses and serviced apartments combined continued to increase. In March quarter 2005, it increased by 5.7% to \$1,483.0 million compared with March quarter 2004.

The seasonally adjusted estimate of the total accommodation takings rose by 9.2% to \$1,496.6 million from March quarter 2004 to March quarter 2005.

ACCOMMODATION TAKINGS (a), Seasonally adjusted and Trend—Australia



(a) Break in time series between the March and June quarters 2003. See Explanatory Notes.

Room occupancy rate

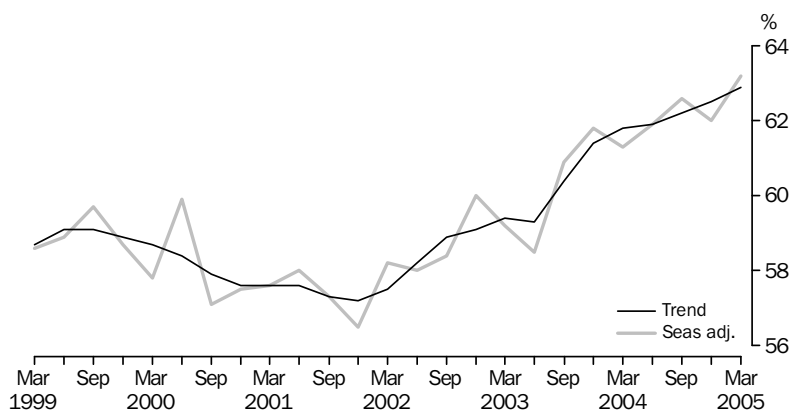
The trend estimate of the room occupancy rate for licensed hotels with facilities, motels and guest houses and serviced apartments combined rose by 1.1 percentage points from 61.8% in March quarter 2004 to 62.9% in March quarter 2005. This rate has been increasing since the September quarter 2003.

The seasonally adjusted estimate of the room occupancy rate increased by 1.9 percentage points to 63.2% from March quarter 2004 to March quarter 2005.

SUMMARY OF FINDINGS *continued*

Room occupancy rate
continued

ROOM OCCUPANCY RATE(a), Seasonally adjusted and
Trend—Australia



(a) Room occupancy rates are not subject to a break in series.

ORIGINAL

ORIGINAL KEY FIGURES, Australia

	Mar Qtr 2004	Dec Qtr 2004	Mar Qtr 2005
Licensed hotels with facilities			
Rooms (no.)	78 474	78 574	79 114
Room nights occupied ('000)	4 798.4	5 035.1	4 908.5
Room occupancy rate (%)	67.3	70.0	69.7
Takings from accommodation (\$'000)	691 864	749 901	749 365
Average takings per room night occupied (\$)	144.2	148.9	152.7
Motels and guest houses			
Rooms (no.)	84 903	85 185	86 060
Room nights occupied ('000)	4 137.2	4 330.7	4 240.0
Room occupancy rate (%)	53.7	55.6	55.4
Takings from accommodation (\$'000)	386 199	412 426	413 752
Average takings per room night occupied (\$)	93.3	95.2	97.6
Serviced apartments			
Rooms (no.)	40 734	41 736	43 848
Room nights occupied ('000)	2 480.9	2 628.6	2 692.8
Room occupancy rate (%)	67.0	68.6	68.4
Takings from accommodation (\$'000)	320 510	350 702	362 213
Average takings per room night occupied (\$)	129.2	133.4	134.5
Total			
Rooms (no.)	204 111	205 495	209 022
Room nights occupied ('000)	11 416.5	11 994.4	11 841.3
Room occupancy rate (%)	61.6	63.7	63.6
Takings from accommodation (\$'000)	1 398 573	1 513 029	1 525 330
Average takings per room night occupied (\$)	122.5	126.1	128.8

Accommodation takings

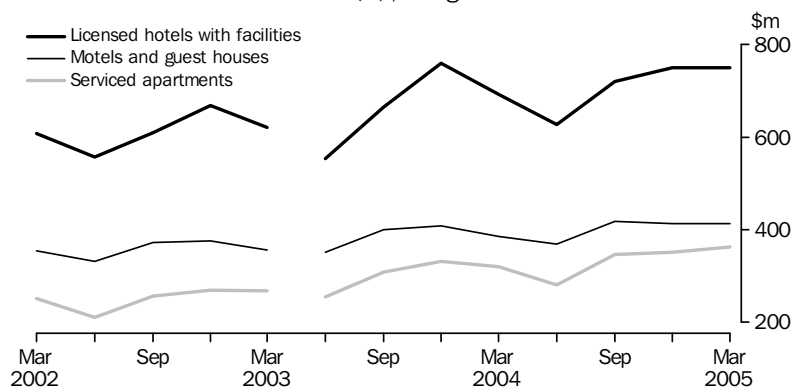
In March quarter 2005, accommodation takings for licensed hotels with facilities, motels and guest houses and serviced apartments combined were \$1,525.3 million. This was an increase of 9.1% (\$126.8 million) from March quarter 2004. The average takings per room night occupied for licensed hotels with facilities, motels and guest houses and serviced apartments combined was \$128.80.

Licensed hotels with facilities were the highest contributor to accommodation takings with \$749.4 million (49.1%). Average takings per room night occupied in March quarter 2005 were highest for licensed hotels with facilities at \$152.70.

SUMMARY OF FINDINGS *continued*

Accommodation takings *continued*

ACCOMMODATION TAKINGS (a), Original—Australia



(a) Break in time series between the March and June quarters 2003. See Explanatory Notes.

The contributions of accommodation takings in March quarter 2005 for licensed hotels with facilities, motels and guest houses and serviced apartments combined were highest in New South Wales (34.9%) and Queensland (25.3%) and lowest in the Northern Territory (2.0%).

Room nights occupied

Total room nights occupied were 11.8 million in March quarter 2005 for licensed hotels with facilities, motels and guest houses and serviced apartments combined. Room nights occupied increased by 3.7% (0.4 million) from March quarter 2004 to March quarter 2005.

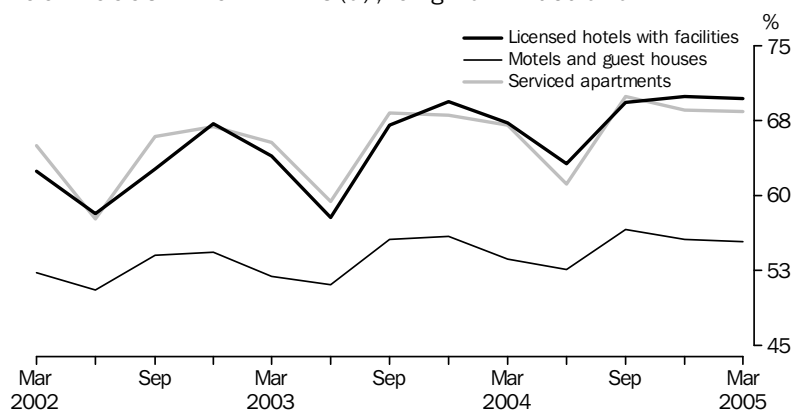
Licensed hotels with facilities represented 4.9 million (41.5%) of the total room nights occupied, while motels and guest houses represented 4.2 million (35.8%) and serviced apartments represented 2.7 million (22.7%).

Room occupancy rate

The room occupancy rate for licensed hotels with facilities, motels and guest houses and serviced apartments combined increased 2.0 percentage points to 63.6% in March quarter 2005 compared with March quarter 2004.

Tasmania recorded the highest room occupancy rate for licensed hotels with facilities, motels and guest houses and serviced apartments combined with 72.8%. This was followed by Victoria (66.3%) and Australian Capital Territory (66.2%).

ROOM OCCUPANCY RATES (a), Original—Australia



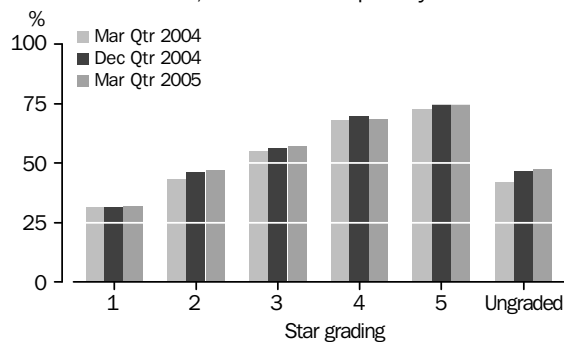
(a) Room occupancy rates are not subject to a break in series.

SUMMARY OF FINDINGS *continued*

Star grading

The room occupancy rate increases with star grading, with five-star establishments recording the highest rate and one-star recording the lowest. In March quarter 2005, the room occupancy rate for five-star establishments was 74.5% compared with 32.0% for one-star.

STAR GRADING, Room occupancy rate—Australia



While the national room occupancy rate for five-star establishments remained stable compared with December quarter 2004, the rate showed increases in New South Wales (from 78.5% to 81.9%) and Victoria (from 78.5% to 82.4%), and decreases in Queensland (from 69.7% to 64.3%) and Western Australia (from 71.8% to 69.2%) over this period.

LIST OF TABLES

page

HOTELS, MOTELS AND GUEST HOUSES AND SERVICED APARTMENTS

ORIGINAL, SEASONALLY ADJUSTED AND TREND

1	Australia	9
----------	-----------	---

SUMMARY

2	Australia	10
----------	-----------	----

STAR GRADING

3	Australia	12
4	New South Wales	14
5	Victoria	16
6	Queensland	18
7	South Australia	20
8	Western Australia	22
9	Tasmania	24
10	Northern Territory	26
11	Australian Capital Territory	28

TOURISM REGIONS

12	New South Wales	30
13	Victoria	32
14	Queensland	34
15	South Australia	36
16	Western Australia	38
17	Tasmania	39
18	Northern Territory and Australian Capital Territory	40

	ORIGINAL		SEASONALLY ADJUSTED		TREND	
	Room occupancy rate	Takings from accommodation(a)	Room occupancy rate	Takings from accommodation(a)	Room occupancy rate	Takings from accommodation(a)
	%	'000	%	'000	%	'000
2001						
September Quarter	58.7	1 226 522	57.3	1 198 893	57.3	1 188 162
December Quarter	57.6	1 209 554	56.5	1 153 864	57.2	1 180 803
2002						
March Quarter	58.6	1 213 991	58.2	1 200 703	57.5	1 186 449
June Quarter	54.8	1 100 074	58.0	1 207 242	58.2	1 203 428
September Quarter	59.6	1 236 869	58.4	1 208 325	58.9	1 219 614
December Quarter	61.7	1 314 053	60.0	1 249 908	59.1	1 225 354
2003						
March Quarter	59.1	1 244 695	59.2	1 232 466	59.4	1 231 430
June Quarter	55.3	1 159 500	58.5	1 276 474	59.3	1 297 525
September Quarter	62.5	1 373 488	60.9	1 336 906	60.4	1 343 624
December Quarter	63.5	1 499 344	61.8	1 429 550	61.4	1 383 416
2004						
March Quarter	61.6	1 398 573	61.3	1 370 389	61.8	1 402 887
June Quarter	58.4	1 277 463	61.9	1 409 446	61.9	1 409 982
September Quarter	64.2	1 485 716	62.6	1 442 882	62.2	1 429 628
December Quarter	63.7	1 513 029	62.0	1 441 162	62.5	1 458 687
2005						
March Quarter	63.6	1 525 330	63.2	1 496 568	62.9	1 483 010

(a) Break in time series between the March and June quarters 2003. See Explanatory Notes.

<i>Period</i>	<i>Establishments</i> no.	<i>Rooms</i> no.	<i>Bed spaces</i> no.	<i>Persons employed</i> no.	<i>Room nights occupied</i> '000	<i>Room occupancy rate</i> %
LICENSED HOTELS WITH FACILITIES						
2003						
December Quarter	796	78 720	202 962	70 046	4 996	69.4
2004						
March Quarter	791	78 474	202 354	69 472	4 798	67.3
June Quarter	793	78 796	204 856	69 629	4 506	63.2
September Quarter	789	78 777	205 297	70 088	5 022	69.3
December Quarter	786	78 574	205 304	69 883	5 035	70.0
2005						
March Quarter	816	79 114	206 172	69 759	4 909	69.7
Year ended March 2004	18 714	65.4
Year ended March 2005	19 472	68.0

MOTELS AND GUEST HOUSES WITH FACILITIES						
2003						
December Quarter	2 415	85 390	246 107	29 473	4 380	55.9
2004						
March Quarter	2 404	84 903	244 265	29 432	4 137	53.7
June Quarter	2 404	84 532	244 770	29 069	4 023	52.6
September Quarter	2 396	84 452	244 387	29 244	4 397	56.7
December Quarter	2 390	85 185	246 227	28 771	4 331	55.6
2005						
March Quarter	2 473	86 060	248 577	29 334	4 240	55.4
Year ended March 2004	16 829	54.1
Year ended March 2005	16 991	55.1

SERVICED APARTMENTS						
2003						
December Quarter	781	40 351	131 183	13 489	2 525	68.1
2004						
March Quarter	786	40 734	132 240	13 371	2 481	67.0
June Quarter	795	41 104	133 268	13 808	2 278	61.2
September Quarter	800	41 601	134 186	13 714	2 669	69.9
December Quarter	797	41 736	134 686	13 762	2 629	68.6
2005						
March Quarter	848	43 848	141 493	14 071	2 693	68.4
Year ended March 2004	9 617	65.8
Year ended March 2005	10 269	67.1

HOTELS, MOTELS AND SERVICED APARTMENTS						
2003						
December Quarter	3 992	204 461	580 252	113 008	11 901	63.5
2004						
March Quarter	3 981	204 111	578 859	112 275	11 417	61.6
June Quarter	3 992	204 432	582 894	112 506	10 808	58.4
September Quarter	3 985	204 830	583 870	113 046	12 088	64.2
December Quarter	3 973	205 495	586 217	112 416	11 994	63.7
2005						
March Quarter	4 137	209 022	596 242	113 164	11 841	63.6
Year ended March 2004	45 160	60.7
Year ended March 2005	46 731	62.5

.. not applicable

<i>Period</i>	<i>Guest nights occupied</i>	<i>Bed occupancy rate</i>	<i>Guest arrivals</i>	<i>Average length of stay</i>	<i>Takings from accommodation</i>
	'000	%	'000	days	\$'000

LICENSED HOTELS WITH FACILITIES

2003					
December Quarter	8 298	44.7	3 590	2.3	759 603
2004					
March Quarter	7 940	43.2	3 343	2.4	691 864
June Quarter	7 289	39.4	3 209	2.3	627 765
September Quarter	8 304	44.0	3 586	2.3	720 863
December Quarter	8 330	44.4	3 654	2.3	749 901
2005					
March Quarter	8 158	44.5	3 457	2.4	749 365
Year ended March 2004	30 784	41.5	13 149	2.3	2 669 829
Year ended March 2005	32 082	43.1	13 905	2.3	2 847 894

MOTELS AND GUEST HOUSES WITH FACILITIES

2003					
December Quarter	7 815	34.6	4 359	1.8	407 394
2004					
March Quarter	7 379	33.3	4 067	1.8	386 199
June Quarter	6 985	31.6	3 984	1.8	368 779
September Quarter	7 809	34.8	4 412	1.8	418 253
December Quarter	7 656	34.0	4 291	1.8	412 426
2005					
March Quarter	7 622	34.5	4 182	1.8	413 752
Year ended March 2004	29 713	33.0	16 590	1.8	1 544 235
Year ended March 2005	30 072	33.7	16 869	1.8	1 613 210

SERVICED APARTMENTS

2003					
December Quarter	5 701	47.3	1 589	3.6	332 348
2004					
March Quarter	5 602	46.7	1 513	3.7	320 510
June Quarter	4 903	40.6	1 420	3.5	280 920
September Quarter	5 883	47.8	1 654	3.6	346 601
December Quarter	5 859	47.4	1 694	3.5	350 702
2005					
March Quarter	6 050	47.7	1 703	3.6	362 213
Year ended March 2004	21 321	44.8	5 890	3.6	1 216 843
Year ended March 2005	22 695	45.9	6 471	3.5	1 340 435

HOTELS, MOTELS AND SERVICED APARTMENTS

2003					
December Quarter	21 814	41.0	9 539	2.3	1 499 344
2004					
March Quarter	20 921	39.8	8 923	2.3	1 398 573
June Quarter	19 177	36.4	8 613	2.2	1 277 463
September Quarter	21 996	41.0	9 653	2.3	1 485 716
December Quarter	21 845	40.7	9 639	2.3	1 513 029
2005					
March Quarter	21 830	41.1	9 341	2.3	1 525 330
Year ended March 2004	81 818	38.6	35 629	2.3	5 430 906
Year ended March 2005	84 849	39.8	37 246	2.3	5 801 539

HOTELS, MOTELS AND SERVICED APARTMENTS, Star grading(a)—Australia

	Licensed hotels with facilities	Motels and guest houses	Serviced apartments	STAR GRADING						
Period				1	2	3	4	5	Ungraded	Total
ESTABLISHMENTS, CAPACITY AND EMPLOYMENT (no.)										
March Quarter 2004										
Establishments	791	2 404	786	47	321	1 909	1 373	111	220	3 981
Rooms	78 474	84 903	40 734	1 412	10 429	70 166	91 952	23 228	6 924	204 111
Bed spaces	202 354	244 265	132 240	4 884	29 383	203 966	264 981	57 115	18 530	578 859
Persons employed	69 472	29 432	13 371	451	4 202	24 741	46 109	33 763	3 009	112 275
March Quarter 2005										
Establishments	816	2 473	848	47	316	2 009	1 431	119	215	4 137
Rooms	79 114	86 060	43 848	1 367	9 722	72 353	94 854	24 587	6 139	209 022
Bed spaces	206 172	248 577	141 493	4 604	27 676	211 026	274 579	61 448	16 909	596 242
Persons employed	69 759	29 334	14 071	594	3 720	24 732	47 109	34 190	2 819	113 164
ROOM NIGHTS OCCUPIED ('000)										
2004										
March Quarter	4 798.4	4 137.2	2 480.9	39.9	406.1	3 504.6	5 668.7	1 534.0	263.2	11 416.5
2005										
January	1 595.3	1 363.3	938.8	12.7	134.9	1 210.7	1 923.3	534.7	81.1	3 897.4
February	1 603.7	1 329.2	830.8	11.2	122.4	1 137.1	1 872.1	544.6	76.1	3 763.6
March	1 709.6	1 547.5	923.2	13.5	142.8	1 321.4	2 048.3	567.8	86.5	4 180.3
March Quarter	4 908.5	4 240.0	2 692.8	37.4	400.1	3 669.2	5 843.7	1 647.1	243.7	11 841.3
ROOM OCCUPANCY RATE (%)										
2004										
March Quarter	67.3	53.7	67.0	31.4	43.1	55.0	67.8	72.7	42.2	61.6
2005										
January	65.7	51.8	69.2	31.5	46.0	54.7	65.6	70.2	45.9	60.7
February	73.2	55.8	67.9	30.9	46.0	56.8	70.8	79.2	47.7	64.9
March	70.5	58.7	68.1	33.5	48.2	59.7	70.0	74.6	48.8	65.1
March Quarter	69.7	55.4	68.4	32.0	46.8	57.1	68.7	74.5	47.5	63.6
GUEST NIGHTS OCCUPIED ('000)										
2004										
March Quarter	7 940.1	7 378.7	5 602.1	69.1	724.5	6 565.5	10 614.0	2 499.4	448.3	20 920.9
2005										
January	2 874.5	2 677.3	2 340.6	22.5	251.8	2 482.2	4 025.9	958.6	151.3	7 892.4
February	2 532.5	2 237.7	1 706.7	18.0	211.5	2 005.2	3 264.6	851.4	126.1	6 476.8
March	2 751.0	2 707.3	2 002.3	21.3	251.8	2 418.5	3 707.4	914.3	147.2	7 460.6
March Quarter	8 157.9	7 622.3	6 049.6	61.8	715.1	6 906.0	10 998.0	2 724.4	424.7	21 829.9
BED OCCUPANCY RATE (%)										
2004										
March Quarter	43.2	33.3	46.7	15.7	27.4	35.5	44.0	48.2	26.9	39.8
2005										
January	45.5	35.2	53.6	16.9	30.4	38.4	47.4	50.4	31.7	43.2
February	44.4	32.6	43.3	15.0	28.1	34.4	42.6	49.6	29.3	39.2
March	43.6	35.6	45.9	16.0	30.1	37.4	43.7	48.1	30.8	40.8
March Quarter	44.5	34.5	47.7	16.0	29.6	36.8	44.7	49.3	30.7	41.1

(a) Star grade classifications have been revised. See Explanatory Notes.

	Licensed hotels with facilities	Motels and guest houses	Serviced apartments	STAR GRADING						
Period				1	2	3	4	5	Ungraded	Total
GUEST ARRIVALS ('000)										
2004										
March Quarter	3 342.9	4 067.2	1 513.0	44.4	412.2	3 184.6	4 129.8	957.4	194.6	8 923.1
2005										
January	1 142.3	1 446.6	592.3	13.4	141.2	1 176.6	1 454.2	334.0	61.8	3 181.3
February	1 124.3	1 252.4	520.2	11.3	120.8	1 011.7	1 355.4	341.7	56.0	2 896.8
March	1 190.2	1 482.8	590.1	13.1	142.4	1 195.5	1 492.0	356.2	63.9	3 263.1
March Quarter	3 456.8	4 181.8	1 702.6	37.8	404.5	3 383.8	4 301.5	1 031.9	181.6	9 341.2
AVERAGE LENGTH OF STAY (days)										
2004										
March Quarter	2.4	1.8	3.7	1.6	1.8	2.1	2.6	2.6	2.3	2.3
2005										
January	2.5	1.9	4.0	1.7	1.8	2.1	2.8	2.9	2.4	2.5
February	2.3	1.8	3.3	1.6	1.8	2.0	2.4	2.5	2.3	2.2
March	2.3	1.8	3.4	1.6	1.8	2.0	2.5	2.6	2.3	2.3
March Quarter	2.4	1.8	3.6	1.6	1.8	2.0	2.6	2.6	2.3	2.3
TAKINGS FROM ACCOMMODATION (\$'000)										
2004										
March Quarter	691 864	386 199	320 510	2 366	26 921	315 340	721 707	306 552	25 687	1 398 573
2005										
January	242 074	136 375	134 347	731	9 821	117 846	263 776	112 292	8 329	512 796
February	241 666	126 813	106 120	657	8 530	102 749	243 599	111 854	7 210	474 599
March	265 626	150 564	121 745	779	10 344	123 074	273 269	122 112	8 356	537 935
March Quarter	749 365	413 752	362 213	2 167	28 694	343 670	780 645	346 259	23 896	1 525 330
AVERAGE TAKINGS PER ROOM NIGHT OCCUPIED (\$)										
2004										
March Quarter	144.2	93.3	129.2	59.3	66.3	90.0	127.3	199.8	97.6	122.5
2005										
January	151.7	100.0	143.1	57.7	72.8	97.3	137.1	210.0	102.7	131.6
February	150.7	95.4	127.7	58.4	69.7	90.4	130.1	205.4	94.7	126.1
March	155.4	97.3	131.9	57.8	72.5	93.1	133.4	215.1	96.6	128.7
March Quarter	152.7	97.6	134.5	58.0	71.7	93.7	133.6	210.2	98.1	128.8
AVERAGE TAKINGS PER AVAILABLE ROOM NIGHT (\$)										
2004										
March Quarter	97.0	50.1	86.6	18.6	28.6	49.5	86.3	145.2	41.1	75.4
2005										
January	99.7	51.8	99.0	18.2	33.5	53.2	90.0	147.5	47.1	79.9
February	110.4	53.2	86.7	18.1	32.1	51.3	92.1	162.7	45.2	81.9
March	109.5	57.1	89.8	19.4	35.0	55.6	93.3	160.4	47.2	83.8
March Quarter	106.4	54.1	92.0	18.5	33.6	53.4	91.8	156.7	46.5	81.9

(a) Star grade classifications have been revised. See Explanatory Notes.

HOTELS, MOTELS AND SERVICED APARTMENTS, Star grading(a)—NSW

	Licensed hotels with facilities	Motels and guest houses	Serviced apartments	STAR GRADING						
Period				1	2	3	4	5	Ungraded	Total
ESTABLISHMENTS, CAPACITY AND EMPLOYMENT (no.)										
March Quarter 2004										
Establishments	199	988	158	24	107	761	357	25	71	1 345
Rooms	23 001	32 571	8 460	914	3 442	25 396	25 343	6 690	2 247	64 032
Bed spaces	55 632	94 001	27 087	3 482	10 017	72 562	69 292	15 142	6 225	176 720
Persons employed	18 597	10 953	2 906	173	1 152	8 015	13 121	9 153	842	32 456
March Quarter 2005										
Establishments	199	1 017	177	21	105	783	389	31	64	1 393
Rooms	23 217	33 229	9 540	846	3 378	25 641	26 875	7 534	1 712	65 986
Bed spaces	58 020	95 707	30 298	3 286	9 750	73 540	74 181	18 352	4 916	184 025
Persons employed	18 871	10 946	2 927	187	1 046	7 507	13 802	9 491	711	32 744
ROOM NIGHTS OCCUPIED ('000)										
2004										
March Quarter	1 550.8	1 588.1	547.7	25.1	153.4	1 267.6	1 708.4	459.5	72.7	3 686.6
2005										
January	504.3	532.0	212.4	7.7	52.5	420.9	568.6	177.0	21.9	1 248.6
February	530.9	502.9	195.2	6.7	46.4	401.2	568.8	186.8	19.1	1 229.0
March	545.0	585.4	208.4	8.2	53.8	462.5	603.6	189.5	21.3	1 338.8
March Quarter	1 580.3	1 620.2	616.0	22.5	152.8	1 284.6	1 741.1	553.3	62.3	3 816.5
ROOM OCCUPANCY RATE (%)										
2004										
March Quarter	74.4	53.7	71.4	30.7	49.7	55.0	74.1	75.8	36.2	63.5
2005										
January	71.6	52.6	72.0	31.8	53.2	54.2	68.3	76.1	48.4	62.1
February	83.8	54.9	73.3	30.5	51.4	57.0	75.8	88.9	46.8	67.7
March	77.7	57.6	71.0	33.8	53.9	59.3	72.8	81.5	47.1	66.6
March Quarter	77.5	55.0	72.1	32.1	52.9	56.8	72.2	81.9	47.4	65.4
GUEST NIGHTS OCCUPIED ('000)										
2004										
March Quarter	2 481.2	2 879.5	1 184.5	46.5	289.6	2 324.1	3 015.6	730.0	139.5	6 545.2
2005										
January	863.0	1 061.5	521.9	14.4	103.7	842.8	1 125.9	317.6	42.0	2 446.4
February	820.3	849.6	406.5	10.9	85.5	687.7	961.1	299.8	31.5	2 076.4
March	857.7	1 020.4	445.9	13.0	100.9	821.9	1 040.0	313.6	34.6	2 324.0
March Quarter	2 540.9	2 931.5	1 374.4	38.3	290.1	2 352.4	3 127.0	930.9	108.1	6 846.8
BED OCCUPANCY RATE (%)										
2004										
March Quarter	49.2	33.8	48.5	14.9	32.7	35.3	47.8	53.3	25.1	40.9
2005										
January	49.3	36.5	56.0	15.6	37.0	37.9	49.0	56.1	33.6	43.8
February	52.2	32.3	48.3	13.0	33.2	34.2	46.5	58.6	27.8	41.1
March	49.3	34.9	48.2	14.1	35.4	36.8	45.5	55.4	27.6	41.6
March Quarter	50.2	34.7	50.9	14.3	35.2	36.4	47.0	56.6	29.7	42.2

(a) Star grade classifications have been revised. See Explanatory Notes.

	Licensed hotels with facilities	Motels and guest houses	Serviced apartments	STAR GRADING						
Period				1	2	3	4	5	Ungraded	Total
GUEST ARRIVALS ('000)										
2004										
March Quarter	988.9	1 738.9	367.0	31.8	168.7	1 299.9	1 248.8	284.8	60.8	3 094.8
2005										
January	330.3	613.8	153.6	9.2	62.2	453.2	443.5	110.6	19.0	1 097.6
February	346.6	505.2	138.0	7.4	51.4	376.3	420.3	118.0	16.2	989.7
March	358.2	600.1	147.3	8.5	59.1	449.6	451.3	119.8	17.5	1 105.7
March Quarter	1 035.1	1 719.1	438.8	25.1	172.7	1 279.1	1 315.0	348.4	52.7	3 193.0
AVERAGE LENGTH OF STAY (days)										
2004										
March Quarter	2.5	1.7	3.2	1.5	1.7	1.8	2.4	2.6	2.3	2.1
2005										
January	2.6	1.7	3.4	1.6	1.7	1.9	2.5	2.9	2.2	2.2
February	2.4	1.7	2.9	1.5	1.7	1.8	2.3	2.5	1.9	2.1
March	2.4	1.7	3.0	1.5	1.7	1.8	2.3	2.6	2.0	2.1
March Quarter	2.5	1.7	3.1	1.5	1.7	1.8	2.4	2.7	2.1	2.1
TAKINGS FROM ACCOMMODATION (\$'000)										
2004										
March Quarter	248 170	151 721	82 240	1 467	10 649	116 798	238 808	106 048	8 360	482 131
2005										
January	86 807	54 614	34 725	432	4 030	41 646	84 751	42 619	2 670	176 147
February	94 264	49 103	29 343	373	3 444	37 968	83 140	45 662	2 123	172 710
March	95 502	57 470	31 214	459	4 150	44 493	87 350	45 373	2 359	184 186
March Quarter	276 573	161 187	95 282	1 264	11 625	124 107	255 241	133 654	7 152	533 042
AVERAGE TAKINGS PER ROOM NIGHT OCCUPIED (\$)										
2004										
March Quarter	160.0	95.5	150.2	58.4	69.4	92.1	139.8	230.8	115.1	130.8
2005										
January	172.1	102.7	163.5	56.2	76.8	98.9	149.0	240.8	122.0	141.1
February	177.5	97.6	150.3	56.0	74.2	94.6	146.2	244.5	111.0	140.5
March	175.2	98.2	149.8	56.3	77.1	96.2	144.7	239.4	110.9	137.6
March Quarter	175.0	99.5	154.7	56.2	76.1	96.6	146.6	241.6	114.8	139.7
AVERAGE TAKINGS PER AVAILABLE ROOM NIGHT (\$)										
2004										
March Quarter	119.0	51.3	107.2	17.9	34.5	50.6	103.6	175.0	41.6	83.0
2005										
January	123.3	54.0	117.8	17.9	40.8	53.6	101.7	183.2	59.0	87.6
February	148.7	53.6	110.2	17.1	38.2	54.0	110.8	217.3	52.0	95.1
March	136.1	56.5	106.4	19.0	41.5	57.0	105.3	195.0	52.2	91.6
March Quarter	135.6	54.7	111.5	18.1	40.2	54.9	105.8	197.9	54.5	91.3

(a) Star grade classifications have been revised. See Explanatory Notes.

	Licensed hotels with facilities	Motels and guest houses	Serviced apartments	STAR GRADING						
Period				1	2	3	4	5	Ungraded	Total
ESTABLISHMENTS, CAPACITY AND EMPLOYMENT (no.)										
March Quarter 2004										
Establishments	136	501	107	2	45	346	308	22	21	744
Rooms	13 629	15 988	5 700	np	1 388	11 581	17 055	4 525	np	35 317
Bed spaces	30 908	46 434	17 820	np	4 184	32 991	46 316	9 482	np	95 162
Persons employed	14 565	5 377	1 658	np	600	3 477	7 861	9 117	np	21 600
March Quarter 2005										
Establishments	141	518	117	3	40	362	328	21	22	776
Rooms	13 615	16 288	6 468	65	1 288	12 040	17 960	4 394	624	36 371
Bed spaces	31 664	46 828	20 079	173	3 785	33 914	49 437	9 352	1 910	98 571
Persons employed	14 306	5 448	1 775	84	538	3 540	8 082	8 843	442	21 529
ROOM NIGHTS OCCUPIED ('000)										
2004										
March Quarter	858.1	759.5	356.0	np	54.8	553.9	1 012.2	323.2	np	1 973.7
2005										
January	292.2	258.2	148.2	0.4	19.2	201.9	365.5	105.3	6.2	698.6
February	292.6	246.3	138.9	0.3	16.4	180.6	364.9	108.3	7.3	677.7
March	315.5	296.8	152.9	0.6	20.1	219.0	404.9	112.5	8.2	765.2
March Quarter	900.3	801.3	439.9	1.3	55.7	601.5	1 135.3	326.1	21.6	2 141.5
ROOM OCCUPANCY RATE (%)										
2004										
March Quarter	69.2	52.4	69.2	np	43.6	52.9	65.3	78.5	np	61.6
2005										
January	69.6	52.3	74.5	21.0	49.5	55.6	65.9	77.3	36.0	62.8
February	77.1	55.4	77.5	14.2	47.0	55.1	73.0	88.0	46.8	67.6
March	75.1	60.2	76.8	30.5	51.1	60.3	73.0	82.6	47.5	68.8
March Quarter	73.8	56.0	76.2	22.2	49.3	57.1	70.5	82.4	43.3	66.3
GUEST NIGHTS OCCUPIED ('000)										
2004										
March Quarter	1 325.1	1 346.1	715.4	np	100.0	1 001.1	1 760.5	474.7	np	3 386.5
2005										
January	488.2	505.8	329.8	0.8	35.7	396.7	714.5	163.5	12.5	1 323.7
February	435.3	412.0	257.0	0.5	29.1	313.8	594.5	153.6	13.0	1 104.4
March	477.9	518.6	301.2	1.1	36.0	395.4	690.4	160.2	14.6	1 297.7
March Quarter	1 401.4	1 436.4	887.9	2.4	100.8	1 105.8	1 999.3	477.2	40.1	3 725.7
BED OCCUPANCY RATE (%)										
2004										
March Quarter	47.1	32.0	44.6	np	26.4	33.6	41.9	55.0	np	39.3
2005										
January	50.1	35.6	53.7	15.0	32.1	38.7	46.8	56.4	24.8	44.0
February	49.5	32.2	46.8	10.1	28.9	33.9	43.3	58.6	28.5	40.7
March	49.0	36.5	49.0	21.1	32.0	38.6	45.2	55.3	29.0	43.1
March Quarter	49.5	34.9	49.9	15.6	31.1	37.2	45.2	56.7	27.4	42.7

np not available for publication but included in totals where applicable, unless otherwise indicated

(a) Star grade classifications have been revised. See Explanatory Notes.

	Licensed hotels with facilities	Motels and guest houses	Serviced apartments	STAR GRADING						
Period				1	2	3	4	5	Ungraded	Total
GUEST ARRIVALS ('000)										
2004										
March Quarter	569.5	749.6	199.0	np	60.6	496.8	764.8	174.3	np	1 518.1
2005										
January	191.2	281.4	81.5	0.5	18.6	192.6	279.0	58.2	5.3	554.1
February	199.5	246.3	79.2	0.3	17.2	169.8	265.2	66.3	6.2	525.0
March	209.6	297.6	88.2	0.6	20.7	206.8	295.0	66.2	6.0	595.4
March Quarter	600.3	825.4	248.8	1.5	56.5	569.2	839.2	190.7	17.4	1 674.5
AVERAGE LENGTH OF STAY (days)										
2004										
March Quarter	2.3	1.8	3.6	np	1.7	2.0	2.3	2.7	np	2.2
2005										
January	2.6	1.8	4.0	1.5	1.9	2.1	2.6	2.8	2.4	2.4
February	2.2	1.7	3.2	1.5	1.7	1.8	2.2	2.3	2.1	2.1
March	2.3	1.7	3.4	1.8	1.7	1.9	2.3	2.4	2.4	2.2
March Quarter	2.3	1.7	3.6	1.6	1.8	1.9	2.4	2.5	2.3	2.2
TAKINGS FROM ACCOMMODATION (\$'000)										
2004										
March Quarter	133 850	74 237	52 228	np	3 532	49 783	136 389	66 681	np	260 315
2005										
January	43 547	26 647	22 932	29	1 407	19 123	50 175	21 630	761	93 125
February	44 791	24 281	19 659	23	1 165	16 149	48 468	22 005	921	88 731
March	55 116	30 903	23 803	51	1 505	20 875	59 250	27 091	1 050	109 823
March Quarter	143 454	81 831	66 393	103	4 077	56 147	157 894	70 726	2 732	291 678
AVERAGE TAKINGS PER ROOM NIGHT OCCUPIED (\$)										
2004										
March Quarter	156.0	97.7	146.7	np	64.4	89.9	134.7	206.3	np	131.9
2005										
January	149.0	103.2	154.7	68.3	73.3	94.7	137.3	205.4	122.8	133.3
February	153.1	98.6	141.6	89.0	70.8	89.4	132.8	203.2	126.5	130.9
March	174.7	104.1	155.7	83.3	75.1	95.3	146.3	240.9	128.6	143.5
March Quarter	159.3	102.1	150.9	79.6	73.2	93.3	139.1	216.9	126.2	136.2
AVERAGE TAKINGS PER AVAILABLE ROOM NIGHT (\$)										
2004										
March Quarter	108.0	51.2	101.5	np	28.1	47.6	88.0	161.9	np	81.2
2005										
January	103.7	54.0	115.2	14.4	36.3	52.6	90.5	158.8	44.2	83.7
February	118.1	54.6	109.8	12.6	33.3	49.3	96.9	178.9	59.3	88.4
March	131.1	62.7	119.6	25.4	38.4	57.5	106.8	198.9	61.0	98.7
March Quarter	117.6	57.2	115.0	17.6	36.1	53.3	98.1	178.8	54.7	90.4

np not available for publication but included in totals where applicable, unless otherwise indicated

(a) Star grade classifications have been revised. See Explanatory Notes.

HOTELS, MOTELS AND SERVICED APARTMENTS, Star grading(a)—Qld

	Licensed hotels with facilities	Motels and guest houses	Serviced apartments	STAR GRADING						
Period				1	2	3	4	5	Ungraded	Total
ESTABLISHMENTS, CAPACITY AND EMPLOYMENT (no.)										
March Quarter 2004										
Establishments	171	513	330	10	74	423	427	37	43	1 014
Rooms	20 515	18 382	16 104	191	2 017	15 937	29 089	6 474	1 293	55 001
Bed spaces	61 659	53 471	53 103	483	5 928	49 630	90 084	18 607	3 501	168 233
Persons employed	19 904	6 581	4 926	67	907	6 220	13 243	10 501	473	31 411
March Quarter 2005										
Establishments	180	529	349	9	78	462	430	38	41	1 058
Rooms	20 786	18 846	16 978	180	2 081	17 279	29 000	7 020	1 050	56 610
Bed spaces	61 695	55 539	56 088	447	6 040	53 697	90 005	20 033	3 100	173 322
Persons employed	19 906	6 482	5 224	67	798	6 452	13 175	10 612	508	31 612
ROOM NIGHTS OCCUPIED ('000)										
2004										
March Quarter	1 185.9	943.8	964.7	6.0	85.7	847.0	1 714.0	385.2	56.5	3 094.4
2005										
January	420.1	305.8	358.5	1.7	29.5	310.9	586.0	140.1	16.1	1 084.3
February	372.8	309.0	292.1	1.6	26.8	282.8	517.5	130.1	15.0	973.9
March	402.5	346.4	332.4	1.7	31.3	319.4	575.4	136.4	17.1	1 081.3
March Quarter	1 195.4	961.2	982.9	5.0	87.6	913.1	1 678.9	406.6	48.3	3 139.5
ROOM OCCUPANCY RATE (%)										
2004										
March Quarter	63.6	56.4	65.8	34.3	46.7	58.5	64.7	65.4	48.1	61.8
2005										
January	65.8	52.6	68.2	29.7	46.3	58.1	65.7	64.4	50.9	62.1
February	64.6	58.8	61.5	32.1	46.7	58.5	64.2	66.2	52.6	61.7
March	63.0	59.7	63.2	30.8	48.6	60.1	64.4	62.7	53.4	62.0
March Quarter	64.5	57.0	64.4	30.8	47.2	58.9	64.8	64.3	52.3	62.0
GUEST NIGHTS OCCUPIED ('000)										
2004										
March Quarter	2 255.7	1 668.3	2 414.4	8.6	151.8	1 727.7	3 649.9	708.0	92.5	6 338.4
2005										
January	877.6	597.7	994.3	2.4	52.2	694.1	1 405.6	282.5	33.0	2 469.6
February	667.9	524.2	663.0	2.2	43.5	535.4	1 024.5	221.3	28.2	1 855.1
March	727.7	613.9	798.4	2.4	52.0	630.0	1 183.3	237.9	34.3	2 139.9
March Quarter	2 273.2	1 735.8	2 455.7	7.0	147.7	1 859.5	3 613.5	741.6	95.4	6 464.7
BED OCCUPANCY RATE (%)										
2004										
March Quarter	40.2	34.3	50.0	19.5	28.1	38.3	44.5	41.8	29.0	41.4
2005										
January	46.2	34.9	57.2	17.2	28.2	41.8	50.6	45.5	35.2	46.2
February	38.9	33.8	42.3	17.8	26.1	35.6	40.8	39.4	33.3	38.4
March	38.3	35.9	46.0	17.3	27.8	38.1	42.6	38.3	36.2	40.0
March Quarter	41.2	34.9	48.7	17.4	27.4	38.6	44.8	41.1	35.0	41.6

(a) Star grade classifications have been revised. See Explanatory Notes.

HOTELS, MOTELS AND SERVICED APARTMENTS, Star grading(a)—Qld *continued*

	Licensed hotels with facilities	Motels and guest houses	Serviced apartments	STAR GRADING						
Period				1	2	3	4	5	Ungraded	Total
GUEST ARRIVALS ('000)										
2004										
March Quarter	833.6	798.5	538.5	3.9	81.2	651.6	1 155.5	243.3	35.2	2 170.7
2005										
January	305.9	288.2	205.4	1.2	27.6	263.9	410.5	86.3	9.9	799.5
February	273.2	263.8	167.1	1.2	23.4	231.3	357.4	81.8	8.9	704.2
March	285.3	301.0	198.2	1.3	28.6	260.7	396.6	86.2	11.1	784.5
March Quarter	864.4	852.9	570.7	3.6	79.6	756.0	1 164.6	254.3	30.0	2 288.1
AVERAGE LENGTH OF STAY (days)										
2004										
March Quarter	2.7	2.1	4.5	2.2	1.9	2.7	3.2	2.9	2.6	2.9
2005										
January	2.9	2.1	4.8	2.1	1.9	2.6	3.4	3.3	3.3	3.1
February	2.4	2.0	4.0	1.9	1.9	2.3	2.9	2.7	3.1	2.6
March	2.6	2.0	4.0	1.9	1.8	2.4	3.0	2.8	3.1	2.7
March Quarter	2.6	2.0	4.3	2.0	1.9	2.5	3.1	2.9	3.2	2.8
TAKINGS FROM ACCOMMODATION (\$'000)										
2004										
March Quarter	169 379	81 642	111 541	349	5 714	76 727	198 814	76 138	4 820	362 561
2005										
January	67 665	29 007	48 080	91	2 070	31 309	78 557	31 057	1 669	144 753
February	52 736	27 645	32 054	87	1 790	24 316	60 255	24 809	1 177	112 435
March	59 618	31 564	37 670	98	2 196	28 339	68 616	28 020	1 582	128 852
March Quarter	180 019	88 215	117 804	276	6 056	83 964	207 428	83 885	4 429	386 039
AVERAGE TAKINGS PER ROOM NIGHT OCCUPIED (\$)										
2004										
March Quarter	142.8	86.5	115.6	58.6	66.6	90.6	116.0	197.7	85.3	117.2
2005										
January	161.1	94.9	134.1	54.7	70.3	100.7	134.1	221.7	103.7	133.5
February	141.5	89.5	109.8	54.0	66.8	86.0	116.4	190.7	78.4	115.4
March	148.1	91.1	113.3	57.1	70.1	88.7	119.3	205.5	92.3	119.2
March Quarter	150.6	91.8	119.9	55.3	69.1	92.0	123.5	206.3	91.8	123.0
AVERAGE TAKINGS PER AVAILABLE ROOM NIGHT (\$)										
2004										
March Quarter	90.8	48.8	76.1	20.1	31.1	53.0	75.1	129.2	41.0	72.5
2005										
January	106.0	49.9	91.4	16.2	32.6	58.5	88.1	142.7	52.7	82.9
February	91.4	52.6	67.5	17.3	31.2	50.3	74.7	126.2	41.2	71.3
March	93.4	54.4	71.6	17.6	34.0	53.3	76.8	128.8	49.3	73.9
March Quarter	97.1	52.3	77.2	17.0	32.6	54.2	80.0	132.8	48.0	76.2

(a) Star grade classifications have been revised. See Explanatory Notes.

HOTELS, MOTELS AND SERVICED APARTMENTS, Star grading(a)—SA

	Licensed hotels with facilities	Motels and guest houses	Serviced apartments	STAR GRADING						
Period				1	2	3	4	5	Ungraded	Total
ESTABLISHMENTS, CAPACITY AND EMPLOYMENT (no.)										
March Quarter 2004										
Establishments	66	144	37	7	38	117	67	9	9	247
Rooms	4 761	5 226	1 827	np	1 478	3 725	4 095	np	335	11 814
Bed spaces	11 288	15 400	6 152	np	3 862	10 938	11 973	np	986	32 840
Persons employed	4 252	2 295	627	np	790	1 818	2 685	np	98	7 174
March Quarter 2005										
Establishments	71	148	36	9	36	127	66	7	10	255
Rooms	4 688	5 295	1 758	np	1 138	4 149	4 341	np	np	11 741
Bed spaces	11 203	15 506	5 666	np	3 122	12 056	12 137	np	np	32 375
Persons employed	4 454	2 149	599	np	743	1 962	3 030	np	np	7 202
ROOM NIGHTS OCCUPIED ('000)										
2004										
March Quarter	263.2	257.9	112.0	np	42.7	183.6	243.2	np	19.3	633.1
2005										
January	83.4	77.2	36.5	np	13.5	61.8	82.3	np	np	197.1
February	90.8	78.6	35.3	np	12.8	60.1	87.3	np	5.9	204.7
March	100.7	96.2	41.1	1.9	14.8	74.8	98.9	np	np	238.0
March Quarter	274.9	251.9	113.0	np	41.1	196.7	268.5	np	np	639.8
ROOM OCCUPANCY RATE (%)										
2004										
March Quarter	60.8	54.3	67.3	np	31.9	54.2	65.3	np	63.3	58.9
2005										
January	57.4	47.1	67.0	np	38.1	48.0	61.4	np	np	54.2
February	69.2	53.0	71.7	np	40.2	51.7	71.8	np	59.8	62.2
March	69.3	58.6	75.5	32.4	41.9	58.2	73.5	np	np	65.4
March Quarter	65.2	52.9	71.4	np	40.1	52.7	68.8	np	np	60.6
GUEST NIGHTS OCCUPIED ('000)										
2004										
March Quarter	394.7	441.9	213.8	np	71.0	330.5	417.2	np	31.6	1 050.4
2005										
January	133.0	147.1	80.6	np	27.6	120.5	147.7	np	np	360.8
February	127.1	129.2	63.4	np	22.1	101.9	132.7	np	10.6	319.8
March	146.3	163.1	79.0	3.2	26.5	129.2	159.7	np	np	388.4
March Quarter	406.5	439.5	222.9	np	76.2	351.6	440.1	np	np	1 068.9
BED OCCUPANCY RATE (%)										
2004										
March Quarter	38.4	31.6	38.2	np	20.3	33.2	38.3	np	35.2	35.2
2005										
January	38.3	30.7	45.9	np	28.5	32.2	39.3	np	np	36.0
February	40.5	29.8	40.0	np	25.3	30.2	39.0	np	36.4	35.3
March	42.1	33.9	45.0	22.8	27.4	34.6	42.5	np	np	38.7
March Quarter	40.3	31.5	43.7	np	27.1	32.4	40.3	np	np	36.7

np not available for publication but included in totals where applicable, unless otherwise indicated

(a) Star grade classifications have been revised. See Explanatory Notes.

	Licensed hotels with facilities	Motels and guest houses	Serviced apartments	STAR GRADING						
Period				1	2	3	4	5	Ungraded	Total
GUEST ARRIVALS ('000)										
2004										
March Quarter	182.0	251.2	71.7	np	38.0	173.3	186.6	np	14.9	504.9
2005										
January	58.8	84.5	26.1	np	13.2	64.5	60.8	np	np	169.4
February	58.7	74.8	24.8	np	11.0	55.5	62.0	np	5.2	158.3
March	62.4	92.4	29.4	2.1	13.8	68.9	69.3	np	np	184.2
March Quarter	179.9	251.7	80.2	np	38.0	188.8	192.1	np	np	511.8
AVERAGE LENGTH OF STAY (days)										
2004										
March Quarter	2.2	1.8	3.0	np	1.9	1.9	2.2	np	2.1	2.1
2005										
January	2.3	1.7	3.1	np	2.1	1.9	2.4	np	np	2.1
February	2.2	1.7	2.6	np	2.0	1.8	2.1	np	2.1	2.0
March	2.3	1.8	2.7	1.5	1.9	1.9	2.3	np	np	2.1
March Quarter	2.3	1.7	2.8	np	2.0	1.9	2.3	np	np	2.1
TAKINGS FROM ACCOMMODATION (\$'000)										
2004										
March Quarter	32 098	23 510	12 998	np	2 773	15 106	27 764	np	2 232	68 606
2005										
January	8 979	7 217	4 430	np	1 045	5 398	9 292	np	np	20 625
February	10 847	7 276	4 199	np	913	5 070	10 239	np	739	22 322
March	12 967	9 301	5 312	117	1 083	6 595	12 506	np	np	27 580
March Quarter	32 793	23 794	13 941	np	3 041	17 063	32 037	np	np	70 527
AVERAGE TAKINGS PER ROOM NIGHT OCCUPIED (\$)										
2004										
March Quarter	121.9	91.2	116.1	np	65.0	82.3	114.2	np	115.7	108.4
2005										
January	107.7	93.5	121.2	np	77.7	87.4	112.9	np	np	104.6
February	119.5	92.6	119.0	np	71.2	84.3	117.3	np	124.2	109.1
March	128.7	96.7	129.1	61.6	73.2	88.1	126.5	np	np	115.9
March Quarter	119.3	94.4	123.4	np	74.0	86.8	119.3	np	np	110.2
AVERAGE TAKINGS PER AVAILABLE ROOM NIGHT (\$)										
2004										
March Quarter	74.1	49.5	78.2	np	20.7	44.6	74.5	np	73.2	63.8
2005										
January	61.8	44.1	81.3	np	29.6	42.0	69.2	np	np	56.7
February	82.6	49.0	85.3	np	28.7	43.6	84.2	np	74.3	67.9
March	89.2	56.7	97.5	19.9	30.7	51.3	92.9	np	np	75.8
March Quarter	77.7	50.0	88.1	np	29.7	45.7	82.1	np	np	66.8

np not available for publication but included in totals where applicable, unless otherwise indicated

(a) Star grade classifications have been revised. See Explanatory Notes.

HOTELS, MOTELS AND SERVICED APARTMENTS, Star grading(a)—WA

	Licensed hotels with facilities	Motels and guest houses	Serviced apartments	STAR GRADING						
Period				1	2	3	4	5	Ungraded	Total
ESTABLISHMENTS, CAPACITY AND EMPLOYMENT (no.)										
March Quarter 2004										
Establishments	127	130	85	1	23	133	117	16	52	342
Rooms	9 557	6 104	4 870	np	np	7 078	8 050	3 035	1 653	20 531
Bed spaces	24 241	15 704	16 149	np	np	18 766	23 774	8 142	3 778	56 094
Persons employed	6 326	1 691	1 841	np	np	2 429	3 801	2 593	735	9 858
March Quarter 2005										
Establishments	126	133	92	—	22	146	112	17	54	351
Rooms	9 702	5 891	5 053	—	645	7 051	8 051	3 199	1 700	20 646
Bed spaces	24 920	15 660	16 493	—	1 441	19 484	23 936	8 257	3 955	57 073
Persons employed	6 271	1 779	2 028	—	191	2 668	3 894	2 664	661	10 078
ROOM NIGHTS OCCUPIED ('000)										
2004										
March Quarter	533.7	266.3	278.8	np	np	328.8	472.1	198.6	57.2	1 078.8
2005										
January	167.4	94.5	105.3	—	6.5	117.5	157.2	64.5	21.5	367.2
February	176.9	90.2	92.6	—	6.3	112.9	155.4	65.6	19.5	359.6
March	193.1	106.2	103.3	—	8.3	130.4	172.5	69.0	22.3	402.6
March Quarter	537.4	290.9	301.1	—	21.2	360.8	485.0	199.1	63.3	1 129.4
ROOM OCCUPANCY RATE (%)										
2004										
March Quarter	61.4	48.1	62.9	np	np	51.0	64.5	71.9	38.0	57.8
2005										
January	56.0	51.9	67.2	—	32.5	53.8	63.1	65.1	42.3	57.6
February	65.5	54.8	65.4	—	35.0	57.2	69.1	73.2	42.5	62.4
March	64.6	58.3	65.9	—	41.7	59.6	69.3	69.6	44.0	63.1
March Quarter	61.9	55.0	66.2	—	36.4	56.9	67.1	69.2	42.9	61.0
GUEST NIGHTS OCCUPIED ('000)										
2004										
March Quarter	834.7	459.2	628.8	np	np	551.9	907.2	349.7	82.6	1 922.8
2005										
January	282.7	176.9	245.0	—	8.7	217.7	324.5	119.9	33.7	704.6
February	264.9	144.6	178.6	—	8.2	180.2	271.0	102.4	26.3	588.1
March	298.8	182.3	216.8	—	11.6	218.8	318.8	116.6	32.1	697.9
March Quarter	846.5	503.7	640.5	—	28.5	616.8	914.3	338.8	92.2	1 990.7
BED OCCUPANCY RATE (%)										
2004										
March Quarter	37.8	32.2	42.8	np	np	32.3	42.0	47.2	24.0	37.7
2005										
January	36.9	36.5	47.9	—	19.6	36.0	43.8	46.8	28.9	40.0
February	38.3	33.0	38.7	—	20.3	33.0	40.5	44.3	25.0	36.9
March	39.0	37.6	42.4	—	25.9	36.2	43.0	45.5	27.6	39.6
March Quarter	38.0	35.8	43.1	—	22.0	35.2	42.5	45.6	27.2	38.9

— nil or rounded to zero (including null cells)

(a) Star grade classifications have been revised. See Explanatory Notes.

np not available for publication but included in totals where applicable, unless otherwise indicated

	Licensed hotels with facilities	Motels and guest houses	Serviced apartments	STAR GRADING						
Period				1	2	3	4	5	Ungraded	Total
GUEST ARRIVALS ('000)										
2004										
March Quarter	395.8	211.4	178.8	np	np	239.2	347.6	147.1	37.5	785.9
2005										
January	131.6	78.7	67.7	—	4.1	100.7	117.2	42.6	13.5	278.1
February	123.1	65.4	56.8	—	3.3	84.8	106.7	38.9	11.5	245.2
March	140.8	81.3	65.9	—	4.0	102.2	122.7	45.2	14.0	288.1
March Quarter	395.5	225.4	190.4	—	11.3	287.7	346.6	126.8	39.0	811.4
AVERAGE LENGTH OF STAY (days)										
2004										
March Quarter	2.1	2.2	3.5	np	np	2.3	2.6	2.4	2.2	2.4
2005										
January	2.1	2.2	3.6	—	2.1	2.2	2.8	2.8	2.5	2.5
February	2.2	2.2	3.1	—	2.5	2.1	2.5	2.6	2.3	2.4
March	2.1	2.2	3.3	—	2.9	2.1	2.6	2.6	2.3	2.4
March Quarter	2.1	2.2	3.4	—	2.5	2.1	2.6	2.7	2.4	2.5
TAKINGS FROM ACCOMMODATION (\$'000)										
2004										
March Quarter	61 782	22 466	33 365	np	np	27 050	54 548	30 844	3 840	117 613
2005										
January	19 738	8 662	13 876	—	359	10 620	19 639	10 166	1 492	42 276
February	21 962	7 840	11 029	—	350	9 756	18 580	10 800	1 345	40 831
March	23 799	9 293	12 837	—	475	11 494	20 756	11 635	1 569	45 929
March Quarter	65 499	25 795	37 743	—	1 184	31 870	58 975	32 601	4 407	129 037
AVERAGE TAKINGS PER ROOM NIGHT OCCUPIED (\$)										
2004										
March Quarter	115.8	84.4	119.7	np	np	82.3	115.6	155.3	67.1	109.0
2005										
January	117.9	91.6	131.8	—	55.3	90.3	125.0	157.6	69.4	115.1
February	124.2	86.9	119.2	—	55.3	86.4	119.6	164.8	69.1	113.5
March	123.3	87.5	124.3	—	56.9	88.2	120.3	168.6	70.3	114.1
March Quarter	121.9	88.7	125.3	—	55.9	88.3	121.6	163.7	69.7	114.3
AVERAGE TAKINGS PER AVAILABLE ROOM NIGHT (\$)										
2004										
March Quarter	71.0	40.5	75.3	np	np	42.0	74.6	111.7	25.5	63.0
2005										
January	66.1	47.6	88.6	—	18.0	48.6	78.8	102.5	29.4	66.3
February	81.4	47.7	78.0	—	19.4	49.4	82.6	120.6	29.3	70.9
March	79.6	51.0	82.0	—	23.7	52.6	83.3	117.3	30.9	72.0
March Quarter	75.5	48.8	83.0	—	20.4	50.2	81.6	113.2	29.9	69.7

— nil or rounded to zero (including null cells)

(a) Star grade classifications have been revised. See Explanatory Notes.

np not available for publication but included in totals where applicable, unless otherwise indicated

HOTELS, MOTELS AND SERVICED APARTMENTS, Star grading(a)—Tas.

	Licensed hotels with facilities	Motels and guest houses	Serviced apartments	STAR GRADING						
Period				1	2	3	4	5	Ungraded	Total
ESTABLISHMENTS, CAPACITY AND EMPLOYMENT (no.)										
March Quarter 2004										
Establishments	54	57	32	1	11	75	47	—	9	143
Rooms	2 947	1 921	1 201	np	np	2 671	2 739	—	236	6 069
Bed spaces	8 172	5 592	4 090	np	np	7 756	8 174	—	793	17 854
Persons employed	2 669	1 061	633	np	np	1 592	2 349	—	180	4 363
March Quarter 2005										
Establishments	60	56	37	3	16	71	53	1	9	153
Rooms	3 108	1 928	1 295	np	463	2 491	3 047	np	np	6 331
Bed spaces	8 485	5 755	4 315	np	1 487	7 258	8 918	np	np	18 555
Persons employed	2 865	1 016	725	np	239	1 400	2 601	np	np	4 606
ROOM NIGHTS OCCUPIED ('000)										
2004										
March Quarter	196.1	128.9	86.6	np	np	183.9	199.9	—	11.8	411.7
2005										
January	63.6	39.6	29.5	np	6.2	51.7	69.3	np	np	132.8
February	67.0	41.1	28.9	np	6.5	52.5	72.5	np	np	137.1
March	69.8	43.8	31.1	np	6.7	56.7	75.7	np	np	144.7
March Quarter	200.5	124.5	89.5	np	19.3	160.9	217.5	np	np	414.5
ROOM OCCUPANCY RATE (%)										
2004										
March Quarter	73.1	73.8	79.2	np	np	75.6	80.2	—	55.0	74.5
2005										
January	66.1	66.2	73.6	np	42.9	67.0	73.3	np	np	67.7
February	77.0	76.4	79.7	np	49.8	75.5	85.0	np	np	77.4
March	72.4	73.3	77.4	np	46.8	73.4	80.1	np	np	73.7
March Quarter	71.7	71.8	76.8	np	46.4	71.8	79.3	np	np	72.8
GUEST NIGHTS OCCUPIED ('000)										
2004										
March Quarter	337.1	253.4	199.7	np	np	367.1	368.9	—	27.7	790.2
2005										
January	122.5	83.8	73.4	np	10.9	117.2	141.0	np	np	279.7
February	114.1	77.9	61.7	np	11.4	104.0	128.6	np	np	253.6
March	120.6	84.1	68.7	np	11.7	116.0	135.8	np	np	273.5
March Quarter	357.2	245.7	203.8	np	33.9	337.2	405.4	np	np	806.7
BED OCCUPANCY RATE (%)										
2004										
March Quarter	45.3	49.8	53.6	np	np	52.0	49.6	—	38.4	48.6
2005										
January	46.6	47.0	54.9	np	23.7	52.1	51.0	np	np	48.6
February	48.0	48.4	51.0	np	27.3	51.3	51.5	np	np	48.9
March	45.9	47.2	51.3	np	25.3	51.5	49.1	np	np	47.5
March Quarter	46.8	47.5	52.5	np	25.3	51.7	50.5	np	np	48.3

— nil or rounded to zero (including null cells)

(a) Star grade classifications have been revised. See Explanatory Notes.

np not available for publication but included in totals where applicable, unless otherwise indicated

	Licensed hotels with facilities	Motels and guest houses	Serviced apartments	STAR GRADING						
Period				1	2	3	4	5	Ungraded	Total
GUEST ARRIVALS ('000)										
2004										
March Quarter	189.9	130.0	84.6	np	np	197.0	173.0	—	16.7	404.5
2005										
January	71.0	44.6	31.1	np	7.4	64.3	69.1	np	np	146.7
February	68.2	41.8	29.2	np	7.3	58.4	67.9	np	np	139.2
March	70.9	45.8	30.0	np	8.2	62.4	70.5	np	np	146.7
March Quarter	210.0	132.2	90.3	np	23.0	185.1	207.5	np	np	432.6
AVERAGE LENGTH OF STAY (days)										
2004										
March Quarter	1.8	1.9	2.4	np	np	1.9	2.1	—	1.7	2.0
2005										
January	1.7	1.9	2.4	np	1.5	1.8	2.0	np	np	1.9
February	1.7	1.9	2.1	np	1.5	1.8	1.9	np	np	1.8
March	1.7	1.8	2.3	np	1.4	1.9	1.9	np	np	1.9
March Quarter	1.7	1.9	2.3	np	1.5	1.8	2.0	np	np	1.9
TAKINGS FROM ACCOMMODATION (\$'000)										
2004										
March Quarter	21 021	13 908	11 097	np	np	17 070	26 614	—	1 345	46 026
2005										
January	7 469	4 530	4 108	np	440	5 310	9 597	np	np	16 107
February	7 637	4 548	3 795	np	440	5 134	9 710	np	np	15 981
March	7 947	4 731	3 984	np	451	5 577	9 906	np	np	16 662
March Quarter	23 053	13 809	11 887	np	1 331	16 021	29 214	np	np	48 749
AVERAGE TAKINGS PER ROOM NIGHT OCCUPIED (\$)										
2004										
March Quarter	107.2	107.9	128.1	np	np	92.8	133.1	—	113.8	111.8
2005										
January	117.3	114.4	139.1	np	71.4	102.6	138.5	np	np	121.3
February	113.9	110.6	131.3	np	68.2	97.7	133.9	np	np	116.6
March	113.9	108.0	128.2	np	67.1	98.4	130.9	np	np	115.2
March Quarter	115.0	110.9	132.8	np	68.8	99.5	134.3	np	np	117.6
AVERAGE TAKINGS PER AVAILABLE ROOM NIGHT (\$)										
2004										
March Quarter	78.4	79.6	101.5	np	np	70.2	106.8	—	62.6	83.3
2005										
January	77.5	75.8	102.3	np	30.6	68.8	101.6	np	np	82.1
February	87.8	84.5	104.7	np	33.9	73.8	113.8	np	np	90.2
March	82.5	79.2	99.2	np	31.4	72.2	104.9	np	np	84.9
March Quarter	82.4	79.7	102.0	np	31.9	71.5	106.5	np	np	85.6

— nil or rounded to zero (including null cells)

np not available for publication but included in totals where applicable, unless otherwise indicated

(a) Star grade classifications have been revised. See Explanatory Notes.

	Licensed hotels with facilities	Motels and guest houses	Serviced apartments	STAR GRADING						
Period				1	2	3	4	5	Ungraded	Total
ESTABLISHMENTS, CAPACITY AND EMPLOYMENT (no.)										
March Quarter 2004										
Establishments	23	46	20	2	17	36	20	1	13	89
Rooms	2 162	2 926	1 318	np	np	2 285	2 752	np	np	6 406
Bed spaces	5 717	8 678	4 073	np	np	6 861	8 012	np	np	18 468
Persons employed	1 598	784	342	np	np	597	1 526	np	np	2 724
March Quarter 2005										
Establishments	24	46	23	2	15	38	22	3	13	93
Rooms	2 076	2 811	1 512	np	np	2 179	2 681	572	np	6 399
Bed spaces	5 615	8 498	4 656	np	np	6 566	8 327	1 139	np	18 769
Persons employed	1 614	850	381	np	np	607	1 139	726	np	2 845
ROOM NIGHTS OCCUPIED ('000)										
2004										
March Quarter	93.2	99.2	49.9	np	np	69.0	131.9	np	np	242.3
2005										
January	29.2	29.2	19.9	np	np	22.6	36.9	9.9	np	78.3
February	32.1	31.6	19.5	np	np	23.4	41.0	10.5	np	83.1
March	39.1	39.5	25.7	np	np	30.9	51.3	12.3	4.4	104.2
March Quarter	100.4	100.3	65.0	np	np	76.9	129.2	32.7	np	265.7
ROOM OCCUPANCY RATE (%)										
2004										
March Quarter	47.4	37.8	41.6	np	np	33.4	52.7	np	np	41.8
2005										
January	45.4	33.8	42.5	np	np	33.5	44.4	55.8	np	39.6
February	55.2	40.5	45.9	np	np	38.4	54.6	65.5	np	46.6
March	60.7	45.7	54.7	np	np	45.7	61.8	69.4	39.8	52.7
March Quarter	53.7	40.0	47.8	np	np	39.2	53.6	63.5	np	46.3
GUEST NIGHTS OCCUPIED ('000)										
2004										
March Quarter	150.0	170.1	96.0	np	np	131.2	214.9	np	np	416.1
2005										
January	47.6	52.3	38.7	np	np	44.8	62.9	15.9	np	138.5
February	48.8	53.6	32.9	np	np	42.4	63.1	16.1	np	135.2
March	60.9	68.7	44.6	np	np	56.3	82.2	19.2	7.6	174.2
March Quarter	157.2	174.6	116.1	np	np	143.4	208.2	51.2	np	447.9
BED OCCUPANCY RATE (%)										
2004										
March Quarter	28.8	21.9	25.9	np	np	21.2	29.5	np	np	24.9
2005										
January	27.3	20.1	26.8	np	np	22.0	24.4	45.0	np	23.9
February	31.0	22.8	25.2	np	np	23.0	27.1	50.3	np	25.9
March	35.0	26.4	30.9	np	np	27.7	31.8	54.5	25.4	30.1
March Quarter	31.1	23.1	27.7	np	np	24.3	27.8	49.9	np	26.7

np not available for publication but included in totals where applicable, unless otherwise indicated

(a) Star grade classifications have been revised. See Explanatory Notes.

	Licensed hotels with facilities	Motels and guest houses	Serviced apartments	STAR GRADING						
Period				1	2	3	4	5	Ungraded	Total
GUEST ARRIVALS ('000)										
2004										
March Quarter	87.2	108.0	33.8	np	np	76.1	116.2	np	np	229.0
2005										
January	24.9	30.6	12.7	np	np	21.0	31.7	8.3	np	68.1
February	26.5	31.5	11.7	np	np	20.0	33.9	9.2	np	69.7
March	31.6	38.0	15.6	np	np	26.3	40.4	10.5	4.3	85.3
March Quarter	83.0	100.1	40.0	np	np	67.2	106.0	28.0	np	223.0
AVERAGE LENGTH OF STAY (days)										
2004										
March Quarter	1.7	1.6	2.8	np	np	1.7	1.9	np	np	1.8
2005										
January	1.9	1.7	3.1	np	np	2.1	2.0	1.9	np	2.0
February	1.8	1.7	2.8	np	np	2.1	1.9	1.7	np	1.9
March	1.9	1.8	2.9	np	np	2.1	2.0	1.8	1.8	2.0
March Quarter	1.9	1.7	2.9	np	np	2.1	2.0	1.8	np	2.0
TAKINGS FROM ACCOMMODATION (\$'000)										
2004										
March Quarter	10 597	10 508	5 949	np	np	6 735	15 475	np	np	27 053
2005										
January	3 418	3 168	2 416	np	np	2 241	4 468	1 599	np	9 002
February	3 949	3 471	2 401	np	np	2 301	5 013	1 852	np	9 821
March	4 624	4 312	3 152	np	np	3 127	6 270	1 929	423	12 088
March Quarter	11 991	10 951	7 969	np	np	7 670	15 751	5 380	np	30 911
AVERAGE TAKINGS PER ROOM NIGHT OCCUPIED (\$)										
2004										
March Quarter	113.7	105.9	119.1	np	np	97.7	117.3	np	np	111.6
2005										
January	117.0	108.6	121.4	np	np	99.1	121.0	161.7	np	115.0
February	123.1	109.9	123.5	np	np	98.3	122.4	176.5	np	118.2
March	118.3	109.2	122.8	np	np	101.3	122.1	156.7	95.7	116.0
March Quarter	119.5	109.2	122.6	np	np	99.7	121.9	164.6	np	116.4
AVERAGE TAKINGS PER AVAILABLE ROOM NIGHT (\$)										
2004										
March Quarter	53.9	40.0	49.6	np	np	32.7	61.8	np	np	46.7
2005										
January	53.1	36.7	51.5	np	np	33.2	53.8	90.2	np	45.6
February	67.9	44.5	56.7	np	np	37.7	66.8	115.7	np	55.0
March	71.8	49.9	67.2	np	np	46.3	75.4	108.8	38.0	61.2
March Quarter	64.2	43.7	58.6	np	np	39.1	65.3	104.5	np	53.9

np not available for publication but included in totals where applicable, unless otherwise indicated

(a) Star grade classifications have been revised. See Explanatory Notes.

	Licensed hotels with facilities	Motels and guest houses	Serviced apartments	STAR GRADING						
Period				1	2	3	4	5	Ungraded	Total
ESTABLISHMENTS, CAPACITY AND EMPLOYMENT (no.)										
March Quarter 2004										
Establishments	15	25	17	—	6	18	30	1	2	57
Rooms	1 902	1 785	1 254	—	np	1 493	2 829	np	np	4 941
Bed spaces	4 737	4 985	3 766	—	np	4 462	7 356	np	np	13 488
Persons employed	1 561	690	438	—	np	593	1 523	np	np	2 689
March Quarter 2005										
Establishments	15	26	17	—	4	20	31	1	2	58
Rooms	1 922	1 772	1 244	—	np	1 523	2 899	np	np	4 938
Bed spaces	4 570	5 084	3 898	—	np	4 511	7 638	np	np	13 552
Persons employed	1 472	664	412	—	np	596	1 386	np	np	2 548
ROOM NIGHTS OCCUPIED ('000)										
2004										
March Quarter	117.4	93.5	85.1	—	np	70.8	187.0	np	np	296.0
2005										
January	35.1	27.0	28.5	—	np	23.3	57.4	np	np	90.6
February	40.6	29.4	28.4	—	np	23.6	64.7	np	np	98.4
March	43.8	33.3	28.3	—	np	27.8	66.1	np	np	105.4
March Quarter	119.4	89.7	85.3	—	np	74.7	188.2	np	np	294.4
ROOM OCCUPANCY RATE (%)										
2004										
March Quarter	67.8	57.5	74.0	—	np	52.1	72.4	np	np	65.7
2005										
January	58.9	49.1	73.9	—	np	49.3	63.9	np	np	59.2
February	75.4	59.3	81.6	—	np	55.3	79.7	np	np	71.2
March	73.5	60.6	73.5	—	np	58.8	73.5	np	np	68.9
March Quarter	69.0	56.2	76.2	—	np	54.5	72.1	np	np	66.2
GUEST NIGHTS OCCUPIED ('000)										
2004										
March Quarter	161.6	160.1	149.6	—	np	132.0	279.7	np	np	471.2
2005										
January	59.9	52.3	57.0	—	np	48.5	103.8	np	np	169.1
February	54.1	46.6	43.5	—	np	39.9	89.0	np	np	144.2
March	61.1	56.2	47.8	—	np	51.0	97.2	np	np	165.1
March Quarter	175.1	155.1	148.3	—	np	139.3	290.1	np	np	478.5
BED OCCUPANCY RATE (%)										
2004										
March Quarter	37.5	35.3	43.3	—	np	32.5	41.6	np	np	38.3
2005										
January	42.3	33.2	47.1	—	np	34.7	43.9	np	np	40.3
February	42.3	32.7	39.9	—	np	31.6	41.6	np	np	38.0
March	43.1	35.7	39.6	—	np	36.4	41.1	np	np	39.3
March Quarter	42.6	33.9	42.3	—	np	34.3	42.2	np	np	39.2

— nil or rounded to zero (including null cells)

(a) Star grade classifications have been revised. See Explanatory Notes.

np not available for publication but included in totals where applicable, unless otherwise indicated

	Licensed hotels with facilities	Motels and guest houses	Serviced apartments	STAR GRADING						
Period				1	2	3	4	5	Ungraded	Total
GUEST ARRIVALS ('000)										
2004										
March Quarter	95.9	79.6	39.7	—	np	50.7	137.4	np	np	215.2
2005										
January	28.7	24.9	14.3	—	np	16.5	42.4	np	np	67.8
February	28.6	23.6	13.5	—	np	15.6	41.9	np	np	65.7
March	31.3	26.6	15.5	—	np	18.6	46.1	np	np	73.4
March Quarter	88.6	75.0	43.3	—	np	50.7	130.4	np	np	206.8
AVERAGE LENGTH OF STAY (days)										
2004										
March Quarter	1.7	2.0	3.8	—	np	2.6	2.0	np	np	2.2
2005										
January	2.1	2.1	4.0	—	np	2.9	2.4	np	np	2.5
February	1.9	2.0	3.2	—	np	2.6	2.1	np	np	2.2
March	2.0	2.1	3.1	—	np	2.7	2.1	np	np	2.3
March Quarter	2.0	2.1	3.4	—	np	2.7	2.2	np	np	2.3
TAKINGS FROM ACCOMMODATION (\$'000)										
2004										
March Quarter	14 967	8 208	11 093	—	np	6 071	23 295	np	np	34 268
2005										
January	4 451	2 531	3 780	—	np	2 200	7 297	np	np	10 762
February	5 481	2 649	3 640	—	np	2 054	8 192	np	np	11 770
March	6 053	2 990	3 772	—	np	2 573	8 615	np	np	12 815
March Quarter	15 984	8 171	11 192	—	np	6 828	24 104	np	np	35 347
AVERAGE TAKINGS PER ROOM NIGHT OCCUPIED (\$)										
2004										
March Quarter	127.5	87.8	130.3	—	np	85.7	124.6	np	np	115.8
2005										
January	126.9	93.8	132.6	—	np	94.5	127.0	np	np	118.8
February	135.1	90.0	128.1	—	np	87.1	126.7	np	np	119.6
March	138.2	89.9	133.1	—	np	92.6	130.4	np	np	121.6
March Quarter	133.8	91.1	131.3	—	np	91.4	128.1	np	np	120.1
AVERAGE TAKINGS PER AVAILABLE ROOM NIGHT (\$)										
2004										
March Quarter	86.5	50.5	96.4	—	np	44.7	90.2	np	np	76.1
2005										
January	74.7	46.1	98.0	—	np	46.6	81.2	np	np	70.3
February	101.8	53.4	104.5	—	np	48.2	100.9	np	np	85.1
March	101.6	54.4	97.8	—	np	54.5	95.9	np	np	83.7
March Quarter	92.4	51.2	100.0	—	np	49.8	92.4	np	np	79.5

— nil or rounded to zero (including null cells)

(a) Star grade classifications have been revised. See Explanatory Notes.

np not available for publication but included in totals where applicable, unless otherwise indicated

<i>Period</i>	<i>South Coast</i>	<i>Illawarra</i>	<i>Sydney</i>	<i>Snowy Mountains</i>	<i>Capital Country</i>	<i>The Murray</i>	<i>Riverina</i>	<i>Explorer Country</i>
---------------	--------------------	------------------	---------------	------------------------	------------------------	-------------------	-----------------	-------------------------

ESTABLISHMENTS, CAPACITY AND EMPLOYMENT (no.)

March Quarter 2005

Establishments	88	34	300	68	65	97	65	129
Bed spaces	6 507	3 521	77 736	9 759	6 142	8 557	5 478	10 786
Rooms	2 156	1 257	31 170	2 605	2 139	2 833	1 906	3 671
Persons employed	689	632	19 466	446	870	943	554	1 183

ROOM NIGHTS OCCUPIED ('000)

2005

January	40.4	21.3	698.3	17.3	28.7	47.4	25.6	48.9
February	32.3	21.7	748.0	13.2	26.1	40.7	29.1	47.0
March	36.4	21.3	770.1	17.7	33.1	52.5	34.2	61.5
March Quarter	109.1	64.3	2 216.4	48.2	87.9	140.5	88.9	157.4

ROOM OCCUPANCY RATE (%)

2005

January	60.4	54.7	72.3	35.8	43.2	53.9	43.3	43.4
February	53.5	61.7	85.7	29.5	45.4	51.3	54.4	46.0
March	54.4	54.9	79.8	34.4	51.9	59.8	58.0	54.3
March Quarter	56.2	57.0	79.0	33.4	46.8	55.1	51.8	48.0

GUEST NIGHTS OCCUPIED ('000)

2005

January	90.4	43.9	1 241.2	40.7	55.9	104.3	45.9	96.5
February	60.3	35.9	1 210.1	26.8	43.0	75.0	43.2	76.8
March	67.7	35.1	1 271.0	36.1	56.6	101.3	54.2	107.0
March Quarter	218.4	114.9	3 722.3	103.5	155.5	280.6	143.3	280.3

GUEST ARRIVALS ('000)

2005

January	45.0	19.7	468.5	18.8	36.0	49.9	34.8	69.4
February	34.0	17.5	500.4	13.6	28.3	40.8	30.2	52.2
March	35.9	17.6	518.2	18.3	35.1	53.4	37.4	69.9
March Quarter	114.9	54.8	1 487.1	50.7	99.4	144.1	102.4	191.5

TAKINGS FROM ACCOMMODATION (\$'000)

2005

January	4 809	2 667	112 084	1 553	2 910	4 475	2 288	4 212
February	3 021	2 605	123 532	1 150	2 645	3 535	2 560	3 999
March	3 435	2 461	126 025	1 582	3 504	4 699	3 033	5 287
March Quarter	11 264	7 733	361 641	4 285	9 059	12 710	7 880	13 498

<i>Period</i>	<i>Hunter</i>	<i>North Coast NSW</i>	<i>Northern Rivers Tropical NSW</i>	<i>New England North West</i>	<i>Outback NSW</i>	<i>Central Coast</i>	<i>Blue Mountains</i>
---------------	---------------	--------------------------------	---	---	------------------------	--------------------------	---------------------------

ESTABLISHMENTS, CAPACITY AND EMPLOYMENT (no.)

March Quarter 2005

Establishments	88	162	84	92	45	41	35
Bed spaces	10 497	17 514	8 153	7 469	3 404	4 997	3 505
Rooms	3 493	5 381	2 686	2 549	1 181	1 592	1 367
Persons employed	1 946	2 475	776	832	335	809	788

ROOM NIGHTS OCCUPIED ('000)

2005

January	55.2	112.4	53.0	37.5	12.5	31.5	18.7
February	55.0	86.8	40.7	30.9	12.5	26.5	18.5
March	61.4	92.5	48.4	45.0	17.7	25.7	21.5
March Quarter	171.6	291.7	142.0	113.4	42.7	83.7	58.6

ROOM OCCUPANCY RATE (%)

2005

January	51.4	67.4	63.7	47.4	34.1	64.1	44.1
February	56.3	57.6	54.1	43.4	37.9	59.6	48.2
March	56.7	55.4	58.1	56.9	48.3	51.8	50.7
March Quarter	54.7	60.2	58.8	49.4	40.2	58.5	47.7

GUEST NIGHTS OCCUPIED ('000)

2005

January	112.0	290.1	122.5	73.4	20.8	72.4	36.5
February	91.9	180.0	81.7	48.2	19.0	52.6	31.9
March	105.7	199.0	96.2	72.4	28.6	52.3	40.8
March Quarter	309.6	669.1	300.4	194.0	68.4	177.4	109.2

GUEST ARRIVALS ('000)

2005

January	56.3	130.1	57.5	46.7	13.0	30.4	21.6
February	49.6	90.4	42.9	35.1	10.7	25.1	18.9
March	57.4	99.5	49.4	49.1	16.1	23.9	24.3
March Quarter	163.3	320.1	149.9	130.9	39.8	79.4	64.8

TAKINGS FROM ACCOMMODATION (\$'000)

2005

January	7 150	15 740	6 323	3 752	833	4 953	2 397
February	7 149	9 267	4 119	2 506	822	3 333	2 466
March	7 761	10 044	5 038	3 719	1 291	3 329	2 977
March Quarter	22 061	35 051	15 481	9 976	2 947	11 615	7 840

Period	Melbourne	Wimmera	Mallee	Western	Western Grampians	Bendigo Loddon	Peninsula	Central Murray	Goulburn	High Country	Lakes
--------	-----------	---------	--------	---------	----------------------	-------------------	-----------	-------------------	----------	-----------------	-------

ESTABLISHMENTS, CAPACITY AND EMPLOYMENT (no.)

March Quarter 2005

Establishments	271	6	41	66	21	32	23	21	30	72	23
Bed spaces	55 422	366	3 663	5 340	1 464	2 463	2 004	1 619	2 391	6 758	2 485
Rooms	22 055	115	1 264	1 683	507	819	753	565	817	1 985	694
Persons employed	15 352	19	398	797	233	360	419	161	414	631	272

ROOM NIGHTS OCCUPIED ('000)

2005

January	489.6	0.8	19.1	35.3	7.7	11.6	12.0	9.7	11.1	18.9	14.1
February	486.2	0.8	16.7	28.2	7.9	12.8	10.3	8.1	12.8	14.6	11.7
March	528.9	1.0	21.6	34.9	9.9	16.5	12.0	10.5	13.8	20.7	13.8
March Quarter	1 504.8	2.6	57.4	98.4	25.5	40.9	34.3	28.3	37.7	54.2	39.6

ROOM OCCUPANCY RATE (%)

2005

January	71.6	22.9	48.7	67.7	49.0	45.9	51.6	55.5	44.0	38.1	65.4
February	78.7	24.3	47.1	59.9	55.8	55.8	48.8	51.0	55.7	33.6	60.3
March	77.4	28.1	55.2	66.8	62.8	64.8	51.3	59.9	54.6	41.8	64.3
March Quarter	75.8	25.1	50.4	65.0	55.8	55.5	50.6	55.6	51.3	38.0	63.4

GUEST NIGHTS OCCUPIED ('000)

2005

January	882.5	1.4	36.2	82.5	13.3	22.5	25.3	19.3	20.2	43.7	36.9
February	771.6	1.2	25.1	53.8	11.5	20.4	19.0	13.7	20.2	27.2	26.0
March	862.2	1.7	36.9	69.0	15.5	28.8	23.2	18.3	23.2	42.3	31.7
March Quarter	2 516.3	4.3	98.3	205.3	40.3	71.7	67.4	51.4	63.6	113.2	94.6

GUEST ARRIVALS ('000)

2005

January	305.6	1.0	21.1	44.3	10.1	12.8	13.8	12.5	11.3	26.7	18.7
February	316.8	0.8	16.6	34.7	8.4	12.6	12.0	9.0	12.3	17.7	14.9
March	335.4	1.3	22.9	41.6	11.2	15.6	14.2	11.6	13.5	26.0	17.5
March Quarter	957.8	3.1	60.6	120.6	29.6	41.0	40.0	33.1	37.2	70.5	51.1

TAKINGS FROM ACCOMMODATION (\$'000)

2005

January	69 928	54	1 685	4 756	672	1 153	1 656	824	1 019	1 811	1 956
February	69 337	48	1 369	3 301	688	1 227	1 326	680	1 211	1 261	1 071
March	85 264	67	1 887	3 999	868	1 702	1 505	891	1 347	1 905	1 503
March Quarter	224 529	169	4 940	12 055	2 228	4 081	4 487	2 395	3 577	4 977	4 529

<i>Period</i>	<i>Gippsland</i>	<i>Melbourne East</i>	<i>Geelong</i>	<i>Macedon</i>	<i>Spa Country</i>	<i>Ballarat</i>	<i>Central Highlands</i>	<i>Upper Yarra</i>	<i>Murray East</i>	<i>Phillip Island</i>
---------------	------------------	---------------------------	----------------	----------------	------------------------	-----------------	------------------------------	------------------------	------------------------	---------------------------

ESTABLISHMENTS, CAPACITY AND EMPLOYMENT (no.)

March Quarter 2005

Establishments	38	15	28	5	4	27	13	12	18	10
Bed spaces	3 026	1 368	2 378	353	252	2 631	946	1 007	1 349	1 286
Rooms	1 113	504	888	122	100	837	311	388	507	344
Persons employed	318	554	504	88	125	403	79	193	104	105

ROOM NIGHTS OCCUPIED ('000)

2005

January	13.4	4.8	17.0	1.0	1.2	12.1	3.1	2.2	6.4	7.5
February	13.5	6.4	14.1	2.0	1.3	11.9	3.4	3.0	5.7	6.5
March	16.0	7.5	17.3	1.9	1.7	16.1	4.2	3.8	7.6	5.5
March Quarter	42.9	18.6	48.4	4.8	4.2	40.1	10.7	9.0	19.6	19.5

ROOM OCCUPANCY RATE (%)

2005

January	40.2	30.5	61.8	25.3	38.3	46.4	32.0	22.2	40.6	70.2
February	45.0	45.2	56.7	57.2	47.2	50.9	39.0	33.6	39.8	67.2
March	47.3	47.9	63.0	50.2	55.2	61.9	44.0	37.8	49.6	51.7
March Quarter	44.2	41.1	60.6	43.8	46.9	53.2	38.3	31.1	43.4	62.9

GUEST NIGHTS OCCUPIED ('000)

2005

January	22.9	8.1	34.1	1.5	2.3	26.1	6.0	3.8	12.2	23.0
February	20.0	9.3	23.6	2.5	2.3	22.9	6.1	4.6	9.6	13.7
March	25.4	11.9	29.6	2.7	3.0	32.9	8.1	6.3	13.4	11.5
March Quarter	68.3	29.3	87.3	6.7	7.7	81.9	20.2	14.6	35.2	48.2

GUEST ARRIVALS ('000)

2005

January	13.1	5.1	17.0	0.9	1.4	15.9	3.7	2.1	8.0	9.0
February	13.5	5.9	14.5	1.3	1.5	14.4	3.9	2.9	5.7	5.6
March	15.8	7.8	16.1	1.4	1.7	18.7	4.6	3.7	8.4	6.3
March Quarter	42.4	18.8	47.6	3.5	4.5	49.0	12.2	8.7	22.0	21.0

TAKINGS FROM ACCOMMODATION (\$'000)

2005

January	1 097	597	2 022	80	269	1 166	325	309	532	1 216
February	1 093	936	1 617	260	282	1 170	278	305	444	828
March	1 318	1 034	2 178	207	406	1 486	441	474	614	728
March Quarter	3 509	2 566	5 817	547	957	3 822	1 044	1 088	1 590	2 772

Period	Gold Coast	Brisbane	Sunshine Coast	Hervey Bay/Maryborough	Darling Downs	Bundaberg	Fitzroy
--------	------------	----------	----------------	------------------------	---------------	-----------	---------

ESTABLISHMENTS, CAPACITY AND EMPLOYMENT (no.)

March Quarter 2005

Establishments	157	163	110	54	72	29	94
Bed spaces	42 257	28 086	17 889	6 103	5 479	2 473	10 347
Rooms	13 313	9 916	5 101	1 978	1 805	767	3 434
Persons employed	8 618	6 526	2 302	855	671	278	1 690

ROOM NIGHTS OCCUPIED ('000)

2005

January	321.5	191.8	117.7	33.2	26.3	12.6	53.8
February	266.2	206.9	83.4	27.6	28.5	12.3	53.6
March	269.8	226.0	97.3	31.1	32.4	14.2	60.5
March Quarter	857.5	624.8	298.4	91.9	87.1	39.2	167.9

ROOM OCCUPANCY RATE (%)

2005

January	77.9	62.5	74.4	54.9	46.9	53.2	51.0
February	71.4	74.5	58.4	50.5	56.4	57.5	56.3
March	65.4	73.4	61.5	50.8	57.9	59.6	57.1
March Quarter	71.6	70.0	65.0	52.1	53.6	56.7	54.7

GUEST NIGHTS OCCUPIED ('000)

2005

January	841.3	351.1	346.7	76.9	49.8	26.3	101.7
February	596.3	321.6	199.9	53.9	47.4	21.2	83.2
March	627.6	357.7	253.0	62.2	56.5	26.1	96.4
March Quarter	2 065.2	1 030.4	799.6	193.0	153.6	73.6	281.2

GUEST ARRIVALS ('000)

2005

January	201.6	148.2	76.0	36.7	34.2	15.2	49.8
February	173.1	149.8	59.8	29.0	31.2	13.3	41.1
March	176.4	165.0	70.2	32.1	35.1	14.8	46.4
March Quarter	551.1	463.0	206.0	97.8	100.5	43.2	137.3

TAKINGS FROM ACCOMMODATION (\$'000)

2005

January	48 214	21 652	18 725	3 096	2 115	1 357	5 656
February	30 968	24 826	10 750	2 186	2 323	1 151	5 163
March	32 517	27 894	12 637	2 694	2 659	1 368	5 688
March Quarter	111 700	74 373	42 112	7 976	7 097	3 875	16 507

<i>Period</i>	<i>Mackay</i>	<i>Whitsundays</i>	<i>Northern</i>	<i>Tropical North Queensland</i>	<i>Outback</i>	<i>Great Barrier Reef(a)</i>
ESTABLISHMENTS, CAPACITY AND EMPLOYMENT (no.)						
March Quarter 2005						
Establishments	53	31	52	178	65	18
Bed spaces	5 588	9 587	6 507	34 260	4 746	9 591
Rooms	1 801	2 727	2 371	11 699	1 698	2 729
Persons employed	1 101	2 259	1 166	5 568	578	2 651
ROOM NIGHTS OCCUPIED ('000)						
2005						
January	31.7	54.8	35.8	188.9	16.3	55.1
February	30.1	38.0	39.0	168.4	19.8	35.3
March	33.8	50.2	42.5	199.1	24.4	46.9
<i>March Quarter</i>	95.6	143.0	117.3	556.3	60.5	137.3
ROOM OCCUPANCY RATE (%)						
2005						
January	56.7	64.8	48.6	53.0	31.3	65.1
February	59.7	49.7	58.8	52.3	41.7	46.2
March	60.6	59.4	57.8	56.5	46.4	55.5
<i>March Quarter</i>	59.0	58.3	55.0	54.0	39.8	55.9
GUEST NIGHTS OCCUPIED ('000)						
2005						
January	58.8	141.3	60.9	391.0	24.1	144.0
February	47.2	89.4	57.8	311.4	25.8	87.8
March	57.2	114.0	69.9	384.7	34.7	110.8
<i>March Quarter</i>	163.2	344.7	188.6	1 087.0	84.6	342.6
GUEST ARRIVALS ('000)						
2005						
January	25.3	38.4	27.1	130.2	16.7	32.6
February	21.8	30.4	27.4	111.1	16.2	25.0
March	26.7	35.9	31.0	129.1	21.8	28.4
<i>March Quarter</i>	73.9	104.6	85.6	370.3	54.7	86.0
TAKINGS FROM ACCOMMODATION (\$'000)						
2005						
January	3 314	11 542	3 365	24 457	1 259	13 913
February	2 888	6 885	3 653	20 111	1 530	8 027
March	3 403	9 431	4 038	24 541	1 984	10 746
<i>March Quarter</i>	9 605	27 858	11 055	69 109	4 774	32 686

(a) Includes those parts of other Tourism Regions which fall within the Great Barrier Reef geographic area. Data are not included in Queensland totals.

<i>Period</i>	<i>Limestone Coast</i>	<i>Murraylands</i>	<i>Fleurieu Peninsula</i>	<i>Adelaide</i>	<i>Adelaide Hills</i>	<i>Barossa</i>	<i>Riverland</i>
---------------	----------------------------	--------------------	-------------------------------	-----------------	---------------------------	----------------	------------------

ESTABLISHMENTS, CAPACITY AND EMPLOYMENT (no.)

March Quarter 2005

Establishments	35	5	13	100	4	10	14
Bed spaces	2 823	341	1 233	18 122	498	1 040	1 496
Rooms	1 002	118	430	6 800	122	379	499
Persons employed	474	62	331	4 047	80	341	549

ROOM NIGHTS OCCUPIED ('000)

2005

January	15.7	2.0	7.8	124.7	2.3	6.5	7.6
February	14.7	1.7	5.8	138.6	1.9	6.2	6.0
March	19.9	2.2	7.5	155.4	2.3	7.7	7.7
March Quarter	50.3	5.9	21.2	418.7	6.6	20.4	21.3

ROOM OCCUPANCY RATE (%)

2005

January	50.7	53.5	58.7	59.2	62.0	55.2	49.4
February	52.2	52.2	48.2	72.8	56.1	58.6	42.7
March	64.1	60.1	56.6	73.7	61.7	65.6	49.8
March Quarter	55.8	55.4	54.7	68.4	60.0	59.8	47.5

GUEST NIGHTS OCCUPIED ('000)

2005

January	30.1	4.0	18.3	219.9	7.5	12.8	14.7
February	22.8	3.3	11.5	212.3	4.6	10.6	9.0
March	32.1	4.0	15.4	250.1	5.0	13.6	13.4
March Quarter	85.0	11.2	45.2	682.3	17.1	37.1	37.1

GUEST ARRIVALS ('000)

2005

January	20.2	2.0	9.7	84.9	2.4	7.1	8.5
February	15.8	1.7	7.1	90.8	1.9	6.4	6.1
March	21.0	2.1	8.7	99.2	2.3	8.0	8.2
March Quarter	57.0	5.8	25.5	274.9	6.6	21.5	22.8

TAKINGS FROM ACCOMMODATION (\$'000)

2005

January	1 397	158	949	13 785	326	749	581
February	1 158	135	633	16 427	238	723	447
March	1 685	191	849	20 012	303	903	591
March Quarter	4 240	485	2 432	50 225	866	2 376	1 619

<i>Period</i>	<i>Clare Valley</i>	<i>Flinders Ranges</i>	<i>Outback SA</i>	<i>Eyre Peninsula</i>	<i>Yorke Peninsula</i>	<i>Kangaroo Island</i>
---------------	-------------------------	----------------------------	-----------------------	---------------------------	----------------------------	----------------------------

ESTABLISHMENTS, CAPACITY AND EMPLOYMENT (no.)

March Quarter 2005

Establishments	4	21	9	27	7	6
Bed spaces	378	2 232	1 038	2 295	403	476
Rooms	127	742	373	831	126	192
Persons employed	80	285	164	595	64	130

ROOM NIGHTS OCCUPIED ('000)

2005

January	1.9	7.6	3.1	12.0	2.2	3.7
February	1.8	7.4	3.2	12.2	1.9	3.3
March	2.4	9.8	3.9	13.1	2.1	3.9
March Quarter	6.1	24.8	10.2	37.2	6.3	10.8

ROOM OCCUPANCY RATE (%)

2005

January	47.0	32.8	26.7	46.5	57.1	66.1
February	50.3	35.7	31.0	52.3	54.7	60.0
March	61.7	42.6	33.7	50.8	54.2	65.2
March Quarter	53.1	37.1	30.5	49.8	55.3	63.8

GUEST NIGHTS OCCUPIED ('000)

2005

January	3.8	12.5	5.4	19.9	4.0	7.8
February	3.1	10.9	4.4	17.3	3.0	6.8
March	4.4	14.9	5.6	19.3	3.1	7.6
March Quarter	11.3	38.3	15.4	56.5	10.0	22.2

GUEST ARRIVALS ('000)

2005

January	2.4	9.5	3.2	13.5	2.2	3.8
February	2.1	8.1	2.4	10.5	1.9	3.4
March	2.8	10.4	3.3	12.4	1.9	4.0
March Quarter	7.3	28.0	8.9	36.3	6.0	11.2

TAKINGS FROM ACCOMMODATION (\$'000)

2005

January	205	604	277	970	175	450
February	181	597	274	975	147	386
March	251	835	339	1 026	161	433
March Quarter	636	2 035	890	2 971	483	1 269

<i>Period</i>	<i>Australia's Coral Coast</i>	<i>Australia's North West</i>	<i>Australia's South West</i>	<i>Experience Perth</i>	<i>Australia's Golden Outback</i>
---------------	--	---------------------------------------	---------------------------------------	-----------------------------	---

ESTABLISHMENTS, CAPACITY AND EMPLOYMENT (no.)

March Quarter 2005

Establishments	35	47	91	121	57
Bed spaces	4 430	7 531	11 304	28 727	5 081
Rooms	1 488	3 233	3 658	10 275	1 992
Persons employed	564	1 176	1 650	5 963	725

ROOM NIGHTS OCCUPIED ('000)

2005

January	19.5	40.2	70.5	213.3	23.8
February	18.3	42.2	57.1	216.0	26.1
March	23.8	52.2	66.5	232.5	27.5
March Quarter	61.6	134.5	194.1	661.8	77.4

ROOM OCCUPANCY RATE (%)

2005

January	42.3	40.9	62.2	67.1	38.5
February	43.8	47.5	55.7	75.2	46.8
March	51.6	53.1	58.6	73.1	44.6
March Quarter	46.0	47.1	59.0	71.7	43.2

GUEST NIGHTS OCCUPIED ('000)

2005

January	38.9	58.3	166.8	400.5	40.1
February	29.7	52.9	110.3	359.1	36.1
March	42.6	73.6	136.0	404.8	40.9
March Quarter	111.1	184.9	413.1	1 164.5	117.1

GUEST ARRIVALS ('000)

2005

January	21.3	16.4	65.1	152.8	22.5
February	17.0	15.8	52.6	139.2	20.6
March	23.6	19.8	61.4	160.1	23.2
March Quarter	61.9	52.0	179.1	452.1	66.3

TAKINGS FROM ACCOMMODATION (\$'000)

2005

January	1 911	3 834	9 659	24 678	2 194
February	1 582	4 088	6 838	25 952	2 372
March	2 070	5 380	7 825	28 145	2 509
March Quarter	5 563	13 302	24 322	78 774	7 076

<i>Period</i>	<i>Hobart and Surrounds</i>	<i>Southern</i>	<i>East Coast</i>	<i>Northern</i>	<i>Launceston and Tamar Valley</i>	<i>North West</i>	<i>West Coast</i>
---------------	-------------------------------------	-----------------	-----------------------	-----------------	--	-----------------------	-----------------------

ESTABLISHMENTS, CAPACITY AND EMPLOYMENT (no.)

March Quarter 2005

Establishments	45	8	17	2	34	34	13
Bed spaces	6 341	np	2 038	np	4 526	3 290	1 494
Rooms	2 365	np	594	np	1 487	1 101	530
Persons employed	1 907	np	380	np	1 248	645	259

ROOM NIGHTS OCCUPIED ('000)

2005

January	58.9	np	12.3	np	28.4	18.1	9.5
February	58.6	np	11.3	np	32.2	19.1	10.5
March	62.3	np	11.6	np	33.1	20.9	11.1
March Quarter	179.7	np	35.2	np	93.8	58.1	31.1

ROOM OCCUPANCY RATE (%)

2005

January	80.3	np	66.8	np	61.7	53.1	58.1
February	88.5	np	67.7	np	77.4	62.2	70.7
March	84.9	np	63.2	np	71.8	61.1	67.6
March Quarter	84.4	np	65.8	np	70.1	58.7	65.3

GUEST NIGHTS OCCUPIED ('000)

2005

January	121.9	np	28.4	np	61.7	34.3	19.6
February	107.8	np	22.7	np	59.7	32.4	19.4
March	115.8	np	24.1	np	63.7	36.0	21.1
March Quarter	345.5	np	75.1	np	185.1	102.6	60.1

GUEST ARRIVALS ('000)

2005

January	50.8	np	17.6	np	33.3	21.9	12.8
February	48.7	np	15.8	np	33.5	20.4	12.7
March	50.3	np	16.7	np	34.3	22.4	13.8
March Quarter	149.8	np	50.1	np	101.1	64.8	39.3

TAKINGS FROM ACCOMMODATION (\$'000)

2005

January	7 581	np	1 556	np	3 229	2 089	1 086
February	7 254	np	1 321	np	3 670	2 073	1 149
March	7 670	np	1 315	np	3 682	2 258	1 186
March Quarter	22 505	np	4 192	np	10 581	6 420	3 421

np not available for publication but included in totals where applicable, unless otherwise indicated

Period Darwin Kakadu Amhem Katherine Tablelands Petermann Alice Springs Canberra

ESTABLISHMENTS, CAPACITY AND EMPLOYMENT (no.)

March Quarter 2005

Establishments	38	5	3	11	8	7	21	58
Bed spaces	8 111	1 167	np	1 622	np	np	4 716	13 552
Rooms	2 804	353	np	554	np	np	1 522	4 938
Persons employed	1 307	172	np	168	np	np	699	2 548

ROOM NIGHTS OCCUPIED ('000)

2005

January	37.9	2.8	np	5.4	np	np	17.3	90.6
February	38.5	2.7	np	4.9	np	np	22.1	98.4
March	48.5	4.6	np	5.9	np	np	27.0	105.4
March Quarter	124.9	10.1	np	16.1	np	np	66.4	294.4

ROOM OCCUPANCY RATE (%)

2005

January	43.6	25.8	np	31.2	np	np	36.6	59.2
February	49.0	27.7	np	31.3	np	np	51.9	71.2
March	55.8	41.6	np	34.4	np	np	57.2	68.9
March Quarter	49.5	31.8	np	32.3	np	np	48.5	66.2

GUEST NIGHTS OCCUPIED ('000)

2005

January	62.2	6.1	np	9.8	np	np	31.4	169.1
February	57.4	5.3	np	8.0	np	np	36.7	144.2
March	74.0	9.7	np	9.6	np	np	45.5	165.1
March Quarter	193.5	21.1	np	27.4	np	np	113.5	478.5

GUEST ARRIVALS ('000)

2005

January	25.9	4.0	np	3.9	np	np	16.6	67.8
February	25.8	3.5	np	3.5	np	np	19.0	65.7
March	30.8	5.2	np	5.0	np	np	22.2	73.4
March Quarter	82.5	12.7	np	12.5	np	np	57.7	206.8

TAKINGS FROM ACCOMMODATION (\$'000)

2005

January	3 837	255	np	376	np	np	1 580	10 762
February	4 055	304	np	317	np	np	2 047	11 770
March	5 029	473	np	410	np	np	2 570	12 815
March Quarter	12 921	1 031	np	1 104	np	np	6 197	35 347

np not available for publication but included in totals where applicable, unless otherwise indicated

EXPLANATORY NOTES

INTRODUCTION

1 This publication presents data from the quarterly Survey of Tourist Accommodation (STA). The STA is a mailout collection that completely enumerates all in-scope accommodation establishments within Australia.

SCOPE

2 From March quarter 2005, the scope of the quarterly STA has been expanded. This takes the form of a reduction in the size cut-off for hotels, motels and guest houses, and serviced apartments from 15 rooms to 5 rooms. The scope also includes those additional establishments included in the triennial collection, conducted in 2000 and 2003. In summary, the scope of the STA now includes the following categories of establishments:

- hotels and resorts with facilities and 5 or more rooms
- motels, private hotels and guest houses with facilities and 5 or more rooms
- serviced apartments with 5 or more units
- holiday flats, units and houses of letting entities with 15 or more rooms or units
- caravan parks with 40 or more powered sites
- visitor hostels with 25 or more bed spaces.

3 Short-term non-residential accommodation, which is in scope of the STA, is accommodation which is not leased, and which is provided to guests who would generally stay for periods of less than two months.

4 Some establishments also provide long-term residential accommodation. For licensed hotels with facilities, motels, guest houses and serviced apartments, the amount of such activity is considered to be insignificant and is included in the data presented in this publication.

5 Note that this publication presents results from the March quarter 2005 STA for the following categories of establishments only:

- hotels and resorts with facilities and 15 or more rooms
- motels, private hotels and guest houses with facilities and 15 or more rooms
- serviced apartments with 15 or more units.

6 First results from the expanded scope will be included in the June quarter 2005 issue. This issue will present results from the March and June quarters 2005, after which results will be published quarterly.

Additional establishments

7 As a result of the expansion of the survey, those establishments on the STA population frame listed as having 5 to 14 rooms were sent survey forms for March quarter 2005. These establishments were previously listed as 'out-of-scope' of the STA collection and had not been contacted by the ABS for inclusion in the survey prior to March quarter 2005.

8 This contact resulted in the identification of an additional 174 establishments with 15 or more rooms. These establishments have been added to the ongoing, 15 or more room STA series from March quarter 2005 and their data have been included in this publication.

9 The majority of these establishments have less than 20 rooms and have minimal contribution to accommodation takings at the state/territory level. For this reason, the inclusion of these additional establishments in the collection has not resulted in a break in series.

10 The table below shows the number of establishments, the average and median number of rooms and the contribution to takings from accommodation at the state/territory level for the additional 174 establishments.

EXPLANATORY NOTES *continued*

Additional establishments continued

CONTRIBUTION OF ADDITIONAL ESTABLISHMENTS, STATE/TERRITORY

	Establishments	Average rooms	Median rooms	Contribution to total takings
<i>State/territory</i>	no.	no.	no.	%
New South Wales	52	19	16	0.9
Victoria	32	21	18	0.8
Queensland	47	21	20	1.0
South Australia	16	20	18	2.1
Western Australia	11	25	18	0.5
Tasmania	10	18	16	1.6
Northern Territory	4	21	17	0.6
Australian Capital Territory	2	20	20	0.6
Australia	174	20	18	0.9

DEFINITIONS OF ACCOMMODATION ESTABLISHMENTS

11 For the purposes of this publication the STA includes the following categories of establishments which provide predominantly short-term non-residential accommodation to the general public:

- licensed hotels and resorts with facilities - establishments with 15 or more rooms which are licensed to operate a public bar and which provide accommodation on a room/suite basis, with a bath/shower and toilet in most guest rooms, but which do not have full cooking facilities (i.e. hot plates and oven/microwave) in most guest rooms.
- motels, private hotels and guest houses with facilities - establishments with 15 or more rooms which are not licensed to operate a public bar, and which provide accommodation on a room/suite basis, with a bath/shower and toilet in most guest rooms, but which do not have full cooking facilities (i.e. hot plates and oven/microwave) in most guest rooms.
- serviced apartments - establishments with 15 or more units which mostly comprise self-contained units at the same location, and which are available on a unit/apartment basis to the general public for a minimum of one night. The units should have full cooking facilities (i.e. hot plates and oven/microwave), refrigerator and bath/shower and toilet facilities; all bed linen and towels should be provided, and daily servicing (i.e. cleaning and bed making) must be available through the on-site management, although this service may not necessarily be used.

COVERAGE

12 The main source of coverage is from the Australian Automobile Association through AAA Tourism Pty Ltd. This is supplemented by notification of new tourism developments and their likely opening dates in selected guides, major tourism journals and periodicals and newspapers. Periodic comparison with lists of accommodation establishments provided by the various tourism commissions and industry associations is also undertaken.

DATA QUALITY

13 The survey does not have a sample component and the data are not subject to sampling variability. However, other inaccuracies collectively referred to as non-sampling error may affect the data. These non-sampling errors may arise from a number of sources, including:

- errors in the reporting of data by providers
- errors in the process of capturing data
- estimation for missing data
- definition and classification errors
- incomplete coverage.

EXPLANATORY NOTES *continued*

DATA QUALITY *continued*

Response rates

14 Every effort has been made to reduce non-sampling error to a minimum by careful design and testing of questionnaires, and efficient operating procedures and systems used to compile statistics.

15 The March quarter 2005 response rates were:

- 94.9% licensed hotels with facilities
- 93.7% motels and guest houses
- 94.2% serviced apartments.

Imputation rates

16 Imputation is the process whereby a value is generated for missing data items by averaging the responses for similar establishments which were operating during the reference period.

17 The March quarter 2005 imputation rates were:

- 3.6% of room nights
- 3.1% of takings.

BREAK IN TIME SERIES

18 In the June quarter 2003 the ABS identified 132 licensed hotels with facilities, motels and guest houses and serviced apartments which had been operating for a number of quarters but were not on the STA frame. These additional establishments were included in the STA from the June quarter 2003.

19 The addition of the 132 tourism establishments resulted in a break in time series between the March and June quarters 2003. The impact of the break in time series is explained in Appendix 1, *Tourist Accommodation, Australia* (cat. no. 8635.0), December quarter 2003. Particular care needs to be taken for all calculations of percentage changes that cross the break in series.

TAKINGS FROM ACCOMMODATION

20 From 1 July 2000, takings from accommodation include gross revenue from the provision of accommodation, including GST. Takings from meals are excluded. Where businesses are unable to provide the data inclusive of GST, it is automatically adjusted by the ABS prior to aggregation and release in output.

STAR GRADING

21 Star grade classifications of establishments were revised by AAA Tourism Pty Ltd. These changes were implemented for the STA in the March quarter 2004 and should be taken into account when making comparisons with previous quarters.

STATISTICAL GEOGRAPHY

22 Small area statistics for 2005 are classified to the *Australian Standard Geographical Classification (ASGC), 2004 Edition* (cat. no. 1216.0). Data are coded to the statistical local area (SLA) level.

23 These SLA data are aggregated to tourism regions as defined by relevant state and territory tourist commissions. Tourism regions are reviewed annually and are subject to boundary and name changes. Where changes have occurred care should be taken when making comparisons with previously published data at this level.

24 Details of SLAs, the composition of tourism regions, major changes to tourism regions and outline maps of tourism regions are provided in the ABS publication *Tourism Region Maps and Concordance Files, Australia* (cat. no. 9503.0.55.001) available from the ABS web site <www.abs.gov.au>.

SEASONAL ADJUSTMENT

25 Seasonal adjustment is a means of removing the estimated effects of normal seasonal variation from the original time series so that the effect of other influences on the series may be more clearly recognised. Seasonal adjustment procedures do not aim to remove the irregular or non-seasonal influences which may be present in any particular quarter. Irregular influences that are highly volatile can make it difficult to interpret the movement of the series even after adjustment for seasonal variation, and cannot be assumed to indicate changes in the trend.

EXPLANATORY NOTES *continued*

SEASONAL ADJUSTMENT *continued*

26 The way in which seasonally adjusted and trend estimates were calculated changed from a Forward Factor methodology to a Concurrent methodology in March quarter 2003. The Forward Factor method relied on an annual analysis of the original time series to estimate seasonal factors that were to be applied in the forthcoming four quarters. Under this method the projected seasonal factors, or forward factors, were not updated until the next annual analysis. The Concurrent methodology uses the most up to date original time series available at each reference period to estimate seasonal factors thus eliminating the need to use projected seasonal factors.

TREND ESTIMATES

27 Smoothing the seasonally adjusted series reduces the impact of the irregular component of the seasonally adjusted series and creates the trend estimates. The trend estimates are derived by applying a 7-term Henderson moving average to the quarterly seasonally adjusted series. The Henderson moving average used in the middle of the time series is symmetric but, as the end of a time series is approached, asymmetric forms of the symmetric moving average are applied. Unlike the weights of the standard 7-term Henderson moving average, the weights used with the quarterly data have been tailored to suit the particular characteristics of individual series.

28 While these techniques enable trend estimates for the latest period to be produced, the process does result in revisions to the trend estimates in recent quarters, particularly as additional original estimates become available. For further information refer to *Information Paper: A Guide to Interpreting Time Series - Monitoring Trends, 2003* (cat. no. 1349.0) available at the ABS web site <www.abs.gov.au>.

EFFECTS OF ROUNDING

29 Where figures have been rounded, discrepancies may occur between totals and the sum of the component items.

RELATED PUBLICATIONS

30 Other ABS publications and products which may be of interest are outlined below. Please note, older publications may no longer be available through ABS bookshops but are available through ABS libraries. All publications released from 1998 onwards are available on the ABS web site <www.abs.gov.au>.

Tourist Accommodation, Small Area Data cat. no. 8635.1.55.001–8635.8.55.001
(data cubes for each state/territory – issued quarterly)

Tourism Region Maps and Concordance Files, Australia cat. no. 9503.0.55.001
(annual)

Tourist Accommodation, Australia, Expanded Scope Collection cat. no.
8635.0.55.001 (irregular)

Short-term Visitor Arrivals Estimates, Australia cat. no. 3401.0.55.001 (issued
monthly)

Overseas Arrivals and Departures, Australia cat. no. 3401.0 (issued monthly)

Australian National Accounts, Tourism Satellite Account cat. no. 5249.0 (annual)

Directory of Tourism Statistics, 2001 cat. no. 1130.0 (irregular)

31 Current publications and other products released by the ABS are listed in the *Catalogue of Publications and Products* (cat. no. 1101.0). The catalogue is available from any ABS office or the ABS web site <www.abs.gov.au>. The ABS also issues a daily Release Advice on the web site which details products to be released in the week ahead.

ABS DATA AVAILABLE ON REQUEST

32 As well as the statistics included in this publication, the ABS has other relevant data available on request. Inquiries should be made to the National Information and Referral Service on 1300 135 070.

EXPLANATORY NOTES *continued*

ABBREVIATIONS

'000	thousand
\$'000	thousand dollars
AAA	Australian Automobile Association
ABS	Australian Bureau of Statistics
ACT	Australian Capital Territory
ASGC	Australian Standard Geographical Classification
cat. no.	Catalogue number
GST	goods and services tax
no.	number
NSW	New South Wales
NT	Northern Territory
Qld	Queensland
SA	South Australia
SLA	statistical local area
STA	Survey of Tourist Accommodation
Tas.	Tasmania
Vic.	Victoria
WA	Western Australia

GLOSSARY

Average length of stay	Average number of days each guest stayed during the reference period. It is a derived item calculated by dividing the number of guest nights by the number of guest arrivals with the result expressed as a number of days.
Average takings per available room night	The takings from accommodation divided by the total number of room nights for the survey period, $\text{Average takings per available room night}(\$) = \frac{\text{Takings from accommodation}}{\text{Room nights available}}$
Average takings per room night occupied	The takings from accommodation divided by the total number of room nights occupied for the survey period, $\text{Average takings per room night occupied}(\$) = \frac{\text{Takings from accommodation}}{\text{Room nights occupied}}$
Bed occupancy rate	The bed occupancy rate represents bed occupancy expressed as a percentage of total capacity available during the survey period, $\text{Bed occupancy rate} (\%) = \frac{\text{Guest nights occupied}}{\text{Guest nights available}} * 100$
Bed spaces	The maximum number of bed spaces normally in place available to accommodate paying guests during the survey period. Three-quarter beds are counted as one bed space; double beds as two bed spaces. Cots and divans not normally used as beds are excluded.
Capacity	Capacity in terms of guest rooms/units is the maximum number available to accommodate paying guests during the survey period. Capacity closed temporarily for seasonal reasons is included.
Establishments	The number of hotels, motels and guest houses and serviced apartments within the scope of the survey which operated for any part of the survey period, or which closed temporarily for the quarter for seasonal reasons.
Guest arrivals	The total number of paying guests counted only on the first night they stayed at the accommodation establishment during the survey period.
Guest nights available	The total number of nights available to all paying guests during the survey period. This is derived from the number of bed spaces multiplied by the number of days for which they were available during the survey period. For establishments closing (other than for seasonal reasons) or opening during this period, operating periods only are included.
Guest nights occupied	The total number of paying guests counted on each night they stayed at the accommodation establishment during the survey period.
Occupancy	Occupancy in terms of room nights occupied refers to the total number of nights each guest room was occupied during the survey period. Occupancy in terms of guest nights refers to the total number of paying guests counted on each night they stayed at the accommodation establishment during the survey period.
Persons employed	The total number of persons working at each accommodation establishment at the end of the survey period (including working proprietors and those working on other than accommodation activities).
Room nights available	The number of guest rooms/units available multiplied by the number of days for which they were available during the survey period. For establishments closing (other than for seasonal reasons) or opening during this period, operating periods only are included.
Room nights occupied	The number of nights each guest room/unit was occupied by a paying guest during the survey period.
Room occupancy rate	The room occupancy rate represents room occupancy expressed as a percentage of total capacity available during the survey period, $\text{Room occupancy rate} (\%) = \frac{\text{Room nights occupied}}{\text{Room nights available}} * 100$

GLOSSARY *continued*

Room occupancy rate <i>continued</i>	providing that, for establishments closing (other than for seasonal reasons) or opening during the survey period, the denominator of the above expression includes only operating periods.
Rooms	The maximum number of rooms available for accommodating short-term paying guests at each hotel, motel and guest house and serviced apartment during the survey period. Units, apartments and suites are treated as rooms for these types of establishments in these survey results.
Star grading	<p>The grading of hotels, motels and guest houses with facilities and serviced apartments is based on the classification system owned by AAA Tourism Pty Ltd. The gradings are allocated according to a points system based on the amenities and facilities available to guests. Details of the grading scheme are contained in the publication <i>Accommodation Guide</i> published by AAA Tourism Pty Ltd for each of the individual Australian Motoring Organisations. For the purpose of classifying establishments to a star grading in this publication, 'half' star gradings are ignored (e.g. a two and a half star grading has been shown as two star).</p> <p>While coverage has significantly improved, some establishments (including some competing in the 4 and 5 star markets and having significant takings) still remain outside the star grading scheme. These establishments have been given a star grading of 'ungraded'.</p>
Takings from accommodation	<p>Since 1 July 2000, takings from accommodation include gross revenue from the provision of accommodation, including GST. Takings from meals are excluded. In cases where takings from accommodation data cannot be provided inclusive of GST the amount of GST payable is estimated and the data revised accordingly.</p> <p>Takings from accommodation for each month generally represent the takings received during that month. Where payments are received in advance of, or after the provision of accommodation to guests, the monthly figure for takings from accommodation may not necessarily bear a direct relationship to the number of guests accommodated during the month.</p>

FOR MORE INFORMATION . . .

- INTERNET** www.abs.gov.au the ABS web site is the best place to start for access to summary data from our latest publications, information about the ABS, advice about upcoming releases, our catalogue, and Australia Now—a statistical profile.
- LIBRARY** A range of ABS publications is available from public and tertiary libraries Australia-wide. Contact your nearest library to determine whether it has the ABS statistics you require, or visit our web site for a list of libraries.
- CPI INFOLINE** For current and historical Consumer Price Index data, call 1902 981 074 (call cost 77c per minute).
- DIAL-A-STATISTIC** This service now provides only current Consumer Price Index statistics call 1900 986 400 (call cost 77c per minute).

INFORMATION SERVICE

Data already published that can be provided within five minutes will be free of charge. Our information consultants can also help you to access the full range of ABS information—ABS user pays services can be tailored to your needs, time frame and budget. Publications may be purchased. Specialists are on hand to help you with analytical or methodological advice.

- PHONE** 1300 135 070
- EMAIL** client.services@abs.gov.au
- FAX** 1300 135 211
- POST** Client Services, ABS, GPO Box 796, Sydney NSW 2001

WHY NOT SUBSCRIBE?

ABS subscription services provide regular, convenient and prompt deliveries of selected ABS publications and products as they are released. Email delivery of monthly and quarterly publications is available.

- PHONE** 1300 366 323
- EMAIL** subscriptions@abs.gov.au
- FAX** (03) 9615 7848
- POST** Subscription Services, ABS, GPO Box 2796Y, Melbourne Vic 3001



2863500003050

ISSN 1031 0770

RRP \$23.00